

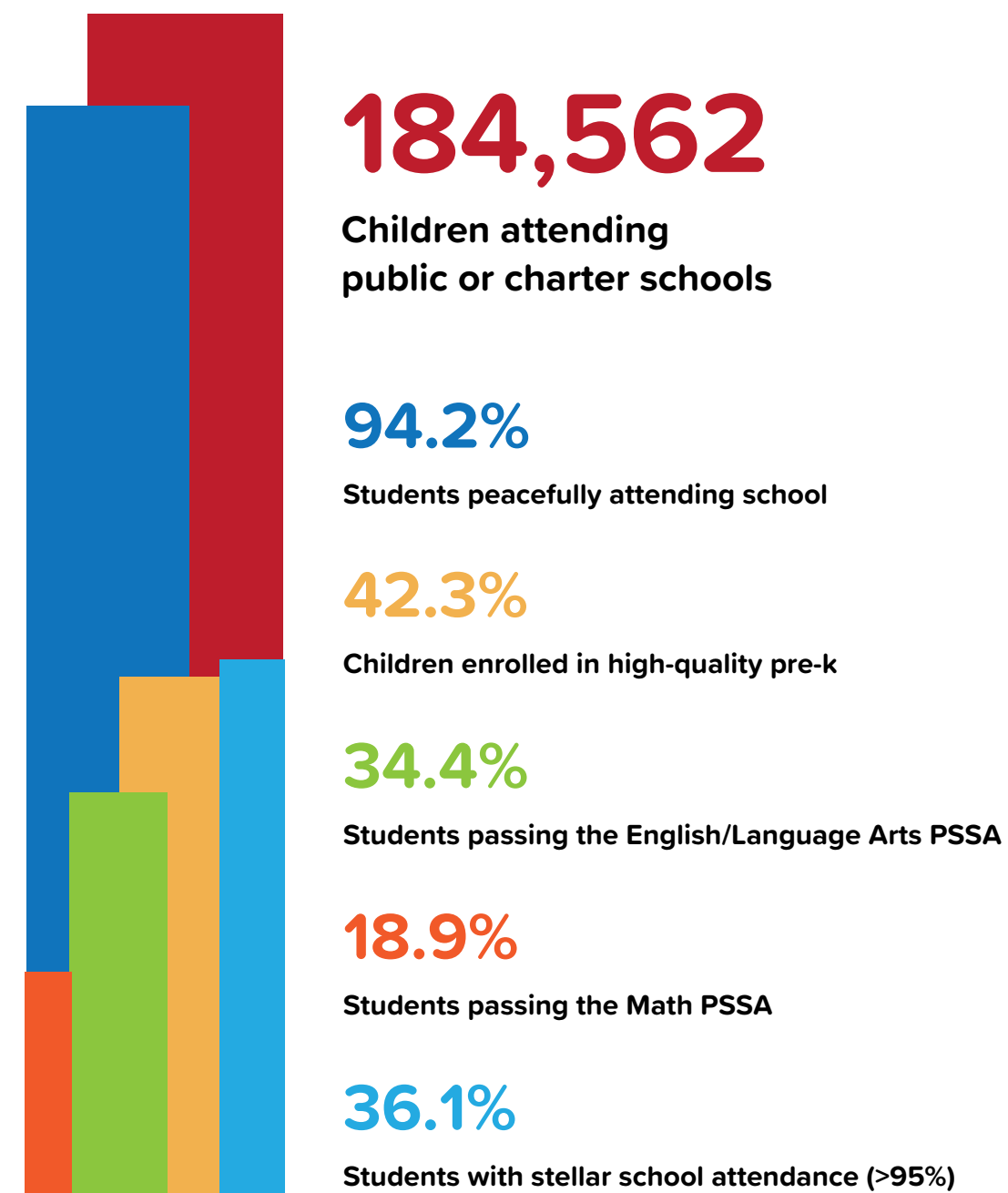
Vital Statistics for Children Citywide

The children citywide need the tools and resources to achieve and be healthy.

In the FY 2025 Philadelphia must:

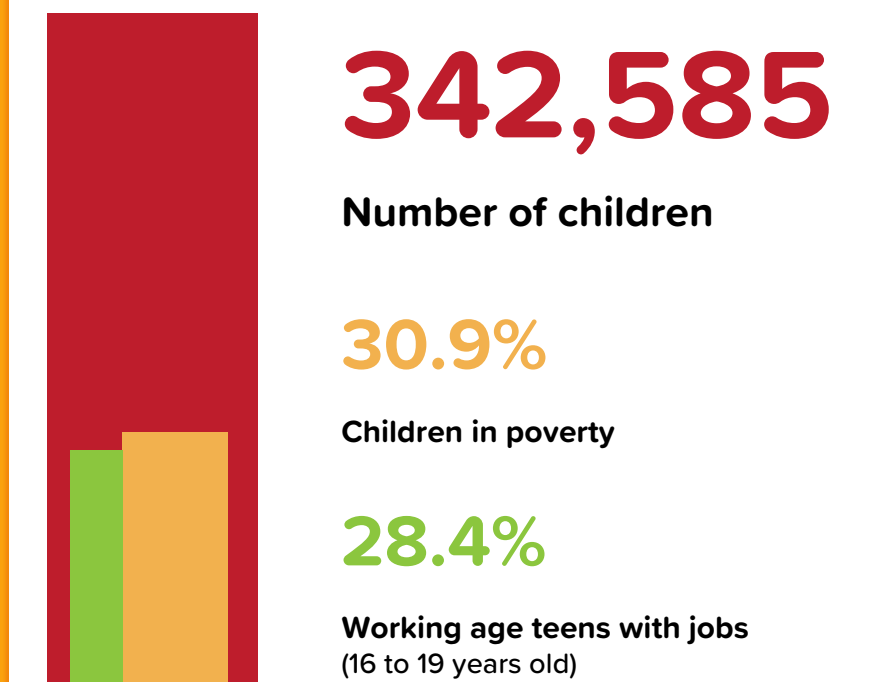
1. Increase city funding for the School District by \$100M.
2. Expand the number of children PHLpreK serves by 250.
3. Give children after-school enrichment options by preserving after-school services for 8,000 children served currently by the School District, investing \$8.8M for youth programming at recreation centers, and continue \$2M for Philly Youth Sports Fund that serves 5,000 more youth.
4. Make neighborhoods safer by redirecting the \$4M in cost savings associated with reduced juvenile justice spending to diversion programs.

How are the students doing Citywide?

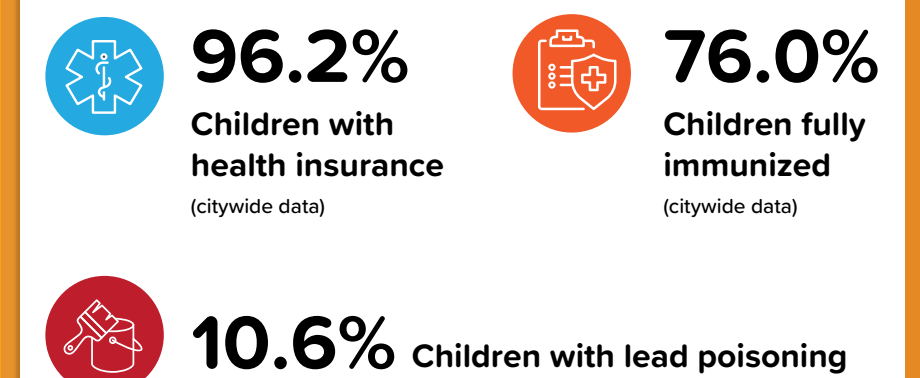


*all data is for children under 18 years old unless indicated (2/2024 data)

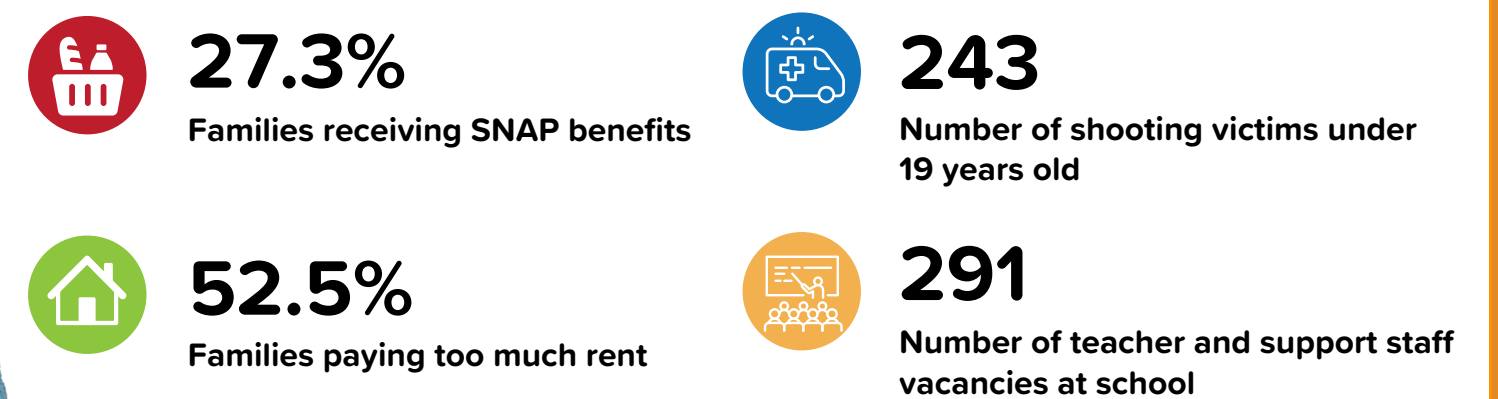
Who are the children growing up in Philadelphia?



Are children in Philadelphia healthy?



What's keeping the children down in Philadelphia?



Setting Philadelphia on a path to a prosperous future starts with children