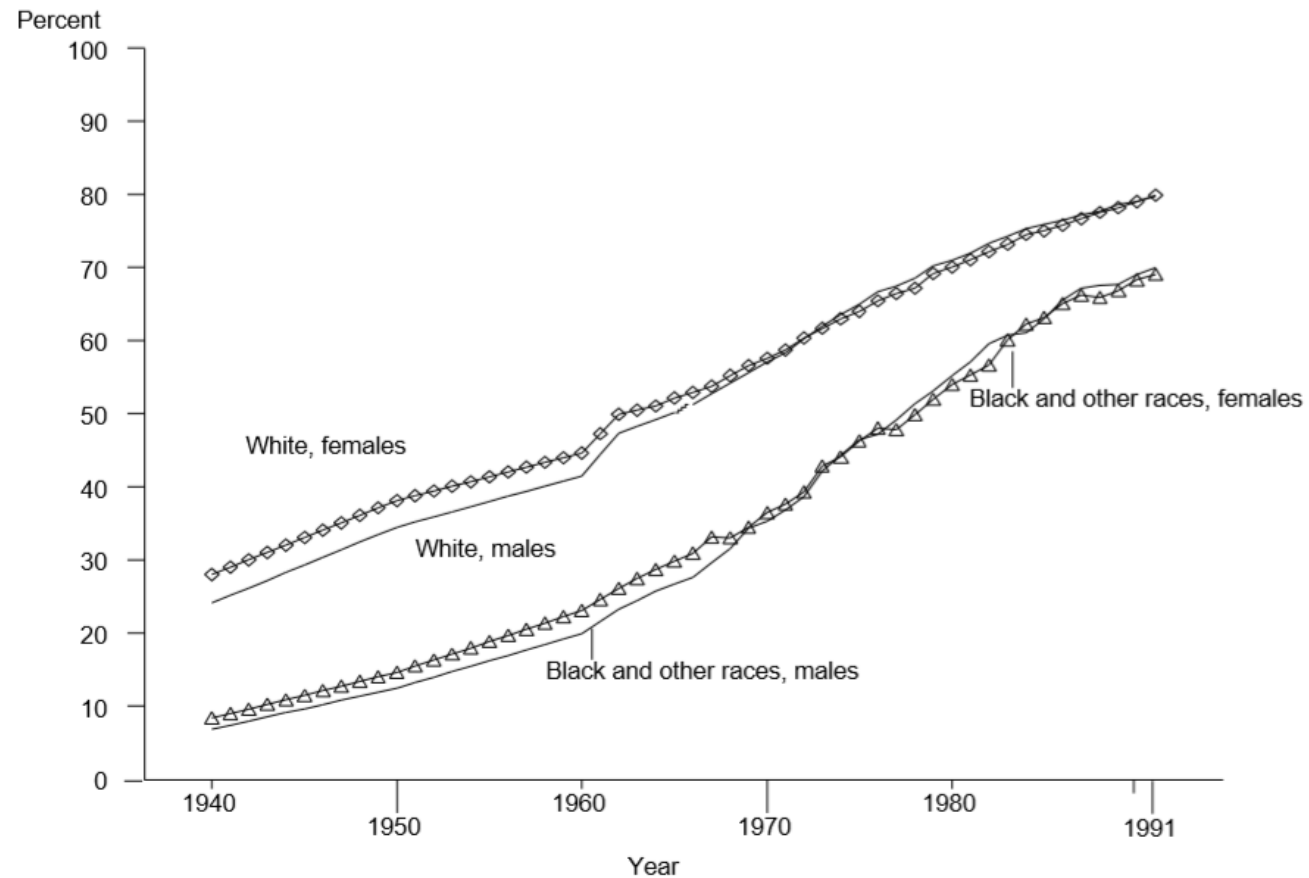


Children develop only as the environment demands development." Sherman and Key 1932



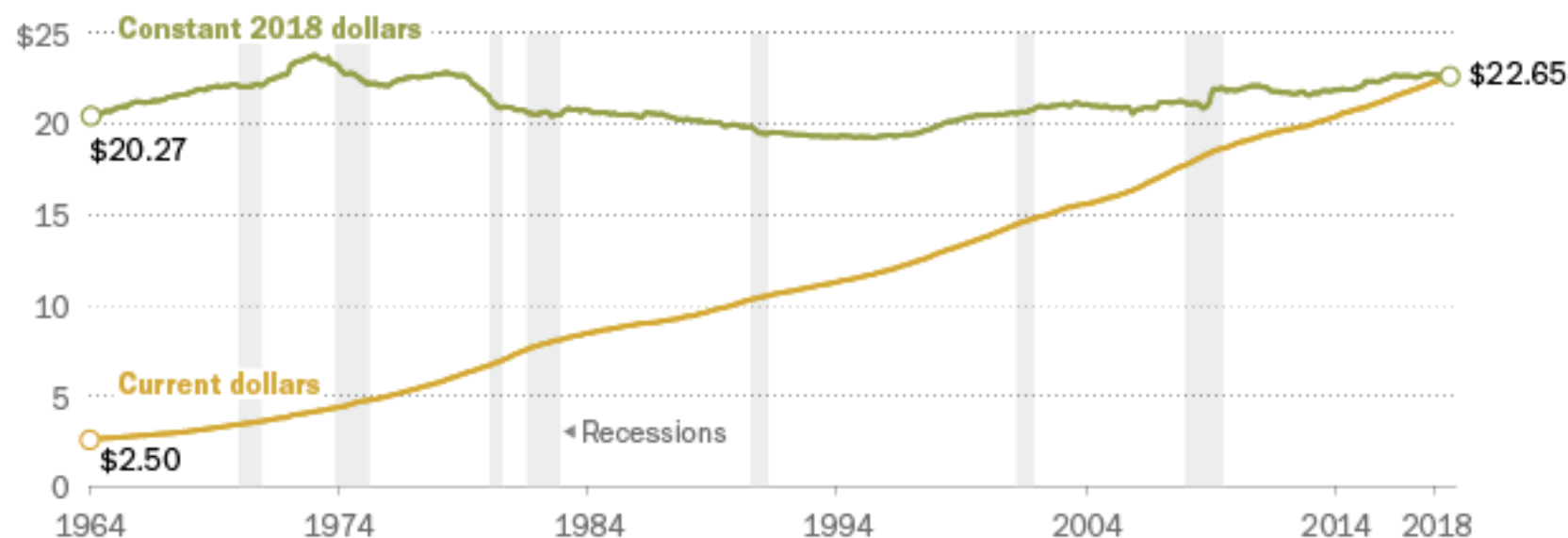
Figure 3.--Percent of persons 25 years old and over completing 4 years of high school, by sex and race: 1940 to 1991



SOURCE: U.S. Department of Commerce, Bureau of the Census, *Historical Statistics of the United States, Colonial Times to 1970*; and Current Population Reports, Series P-20, *Educational Attainment in the United States*, various issues.

Americans' paychecks are bigger than 40 years ago, but their purchasing power has hardly budged

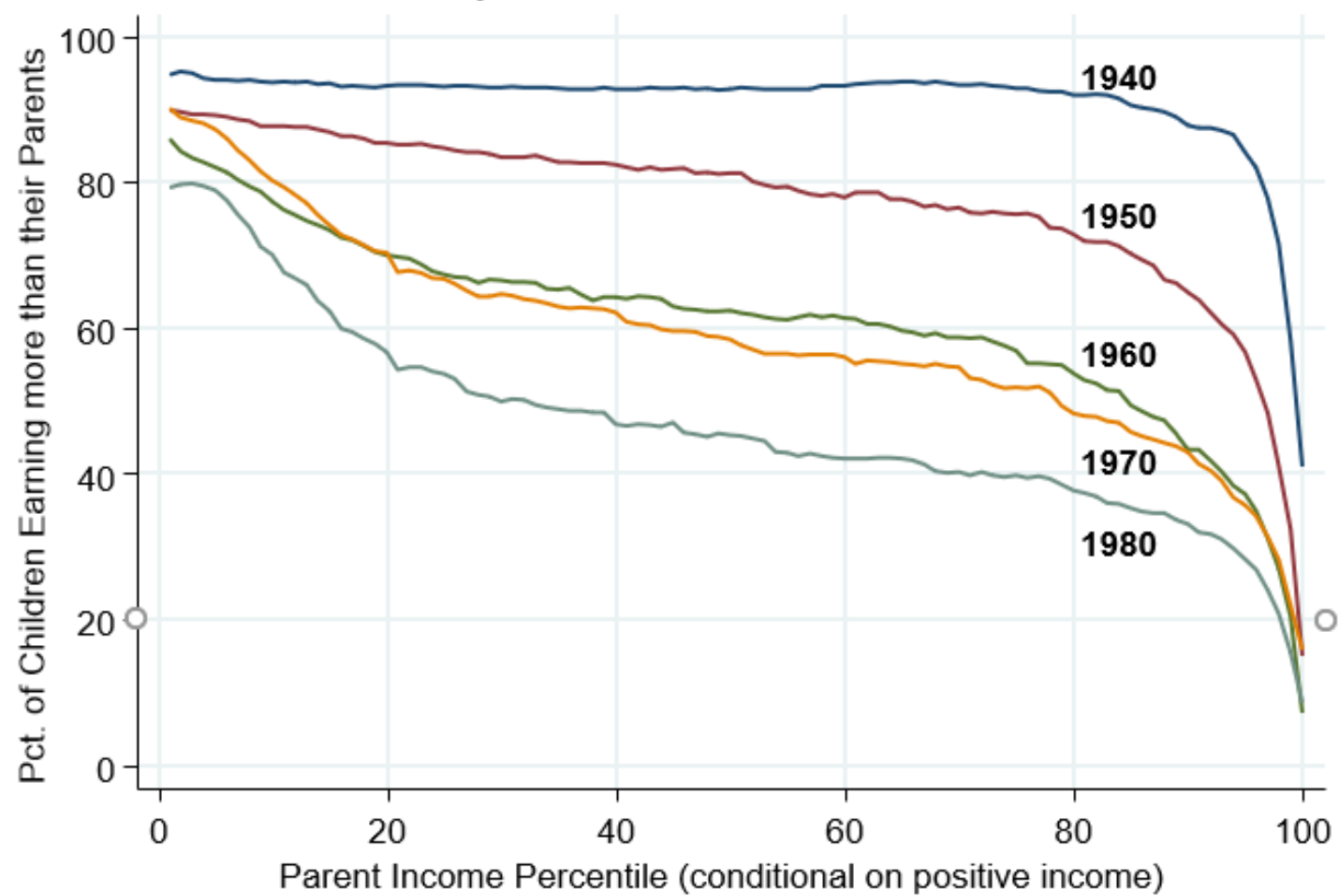
Average hourly wages in the U.S., seasonally adjusted



Note: Data for wages of production and non-supervisory employees on private non-farm payrolls. "Constant 2018 dollars" describes wages adjusted for inflation. "Current dollars" describes wages reported in the value of the currency when received. "Purchasing power" refers to the amount of goods or services that can be bought per unit of currency.
Source: U.S. Bureau of Labor Statistics.

PEW RESEARCH CENTER

Percent of Children Earning More than their Parents
By Parent Income Percentile



Mean Rates of Absolute Mobility by Cohort

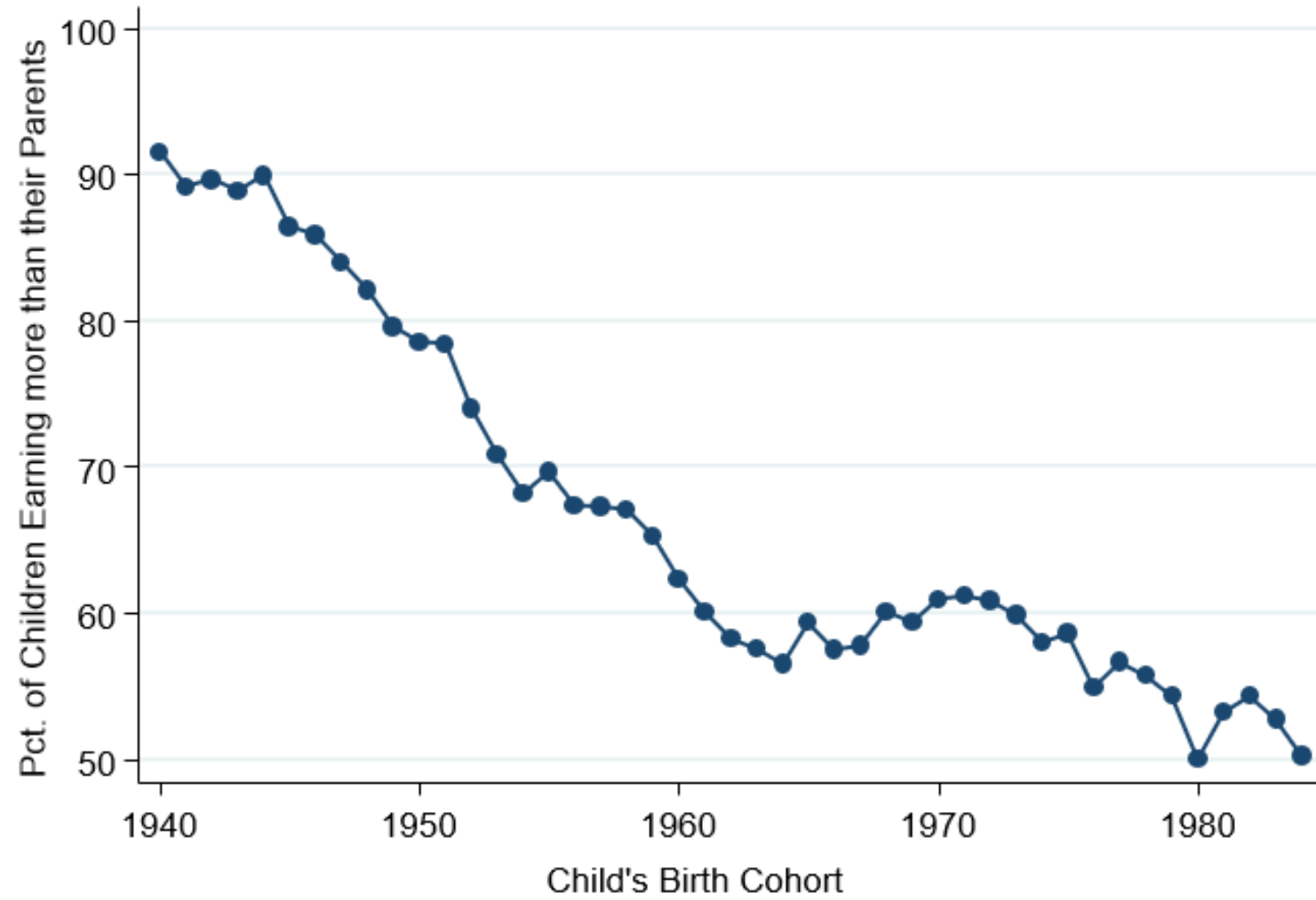
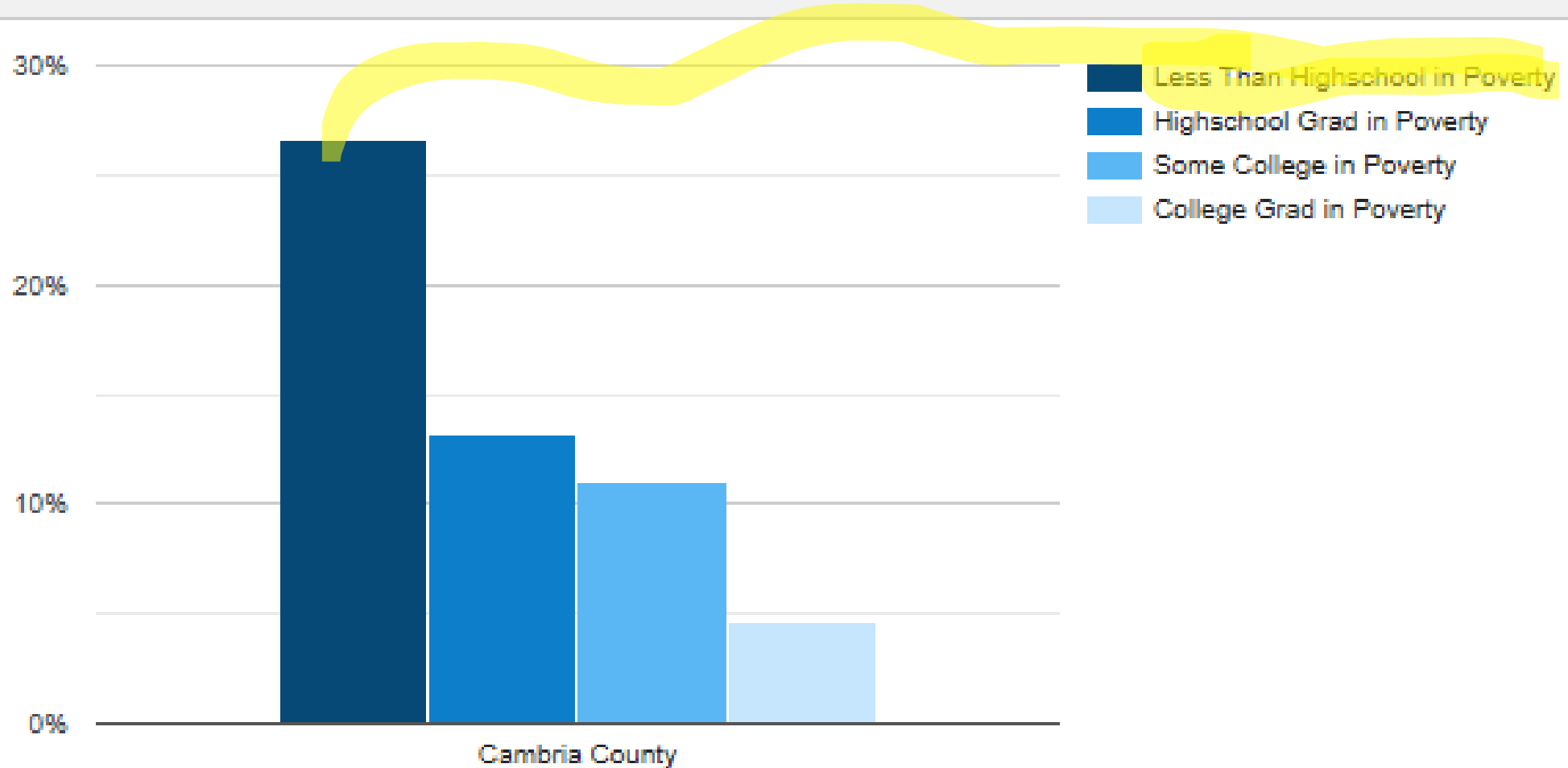
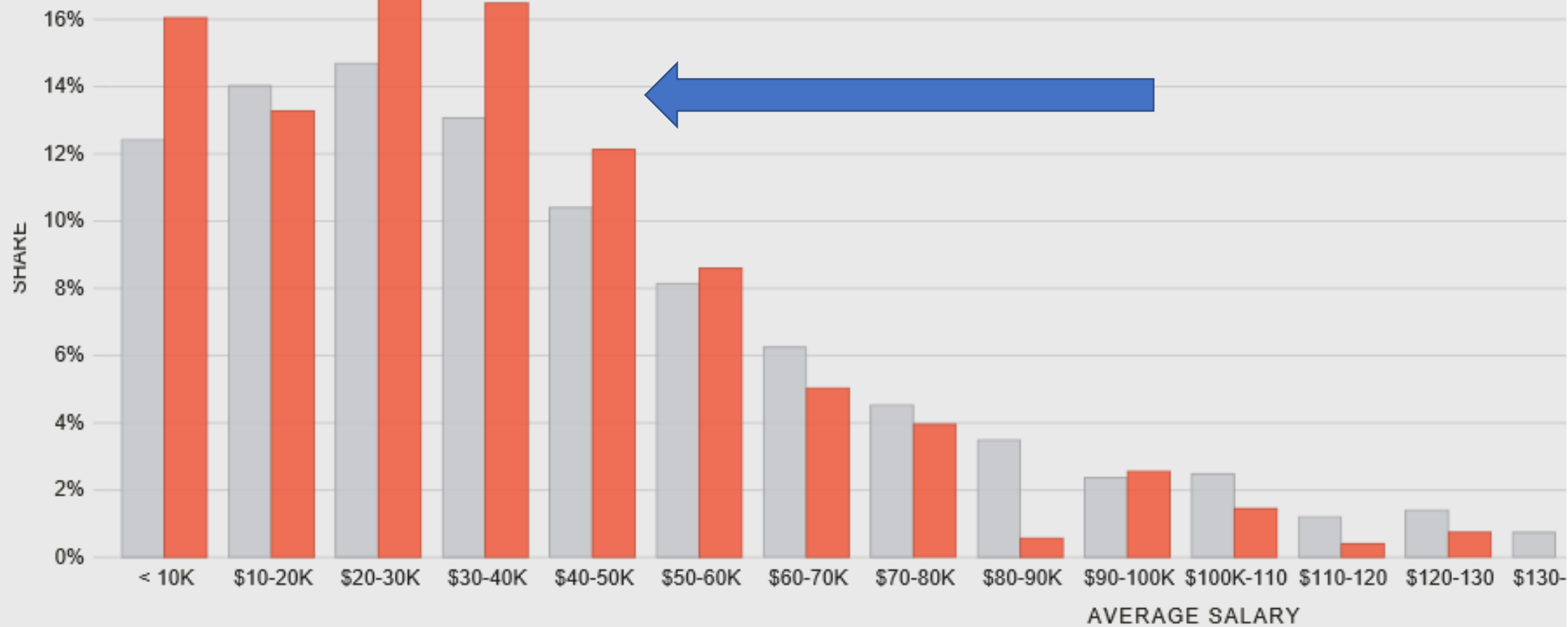


Figure 28: Cambria County, PA Poverty and Education Attainment Level

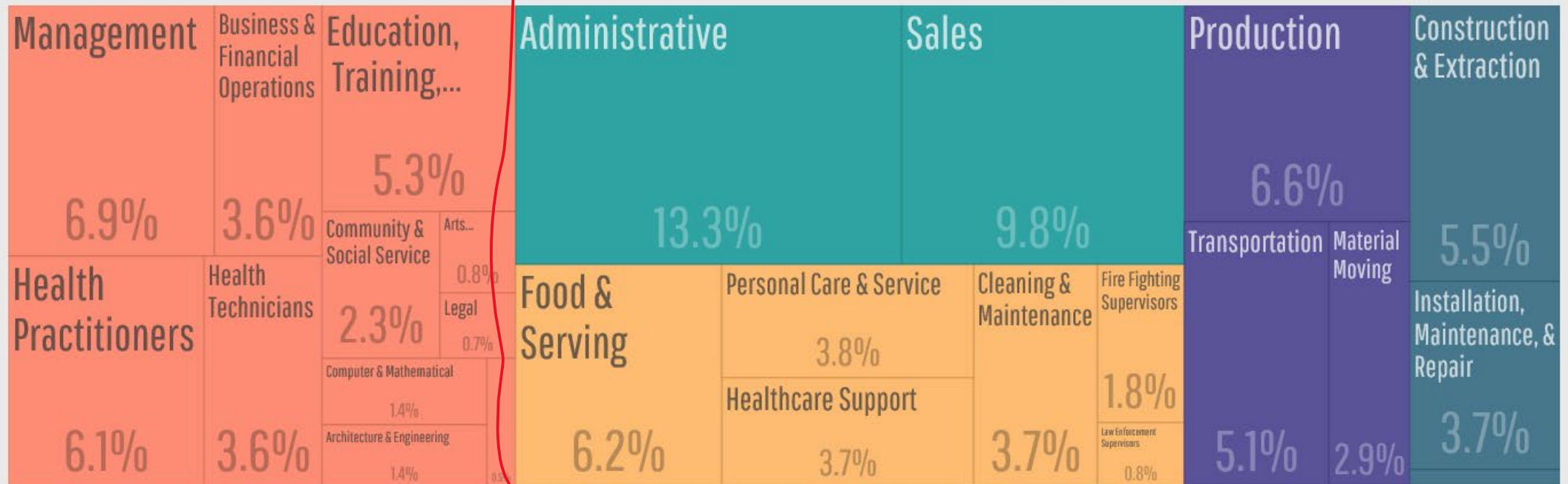




2014 | 2015 | 2016

OCCUPATIONS

[View Data](#)
[Save Image](#)
[Share/Embed](#)
[Add Data to Cart](#)



2013 | 2014 | 2015 | 2016

Employment By industry

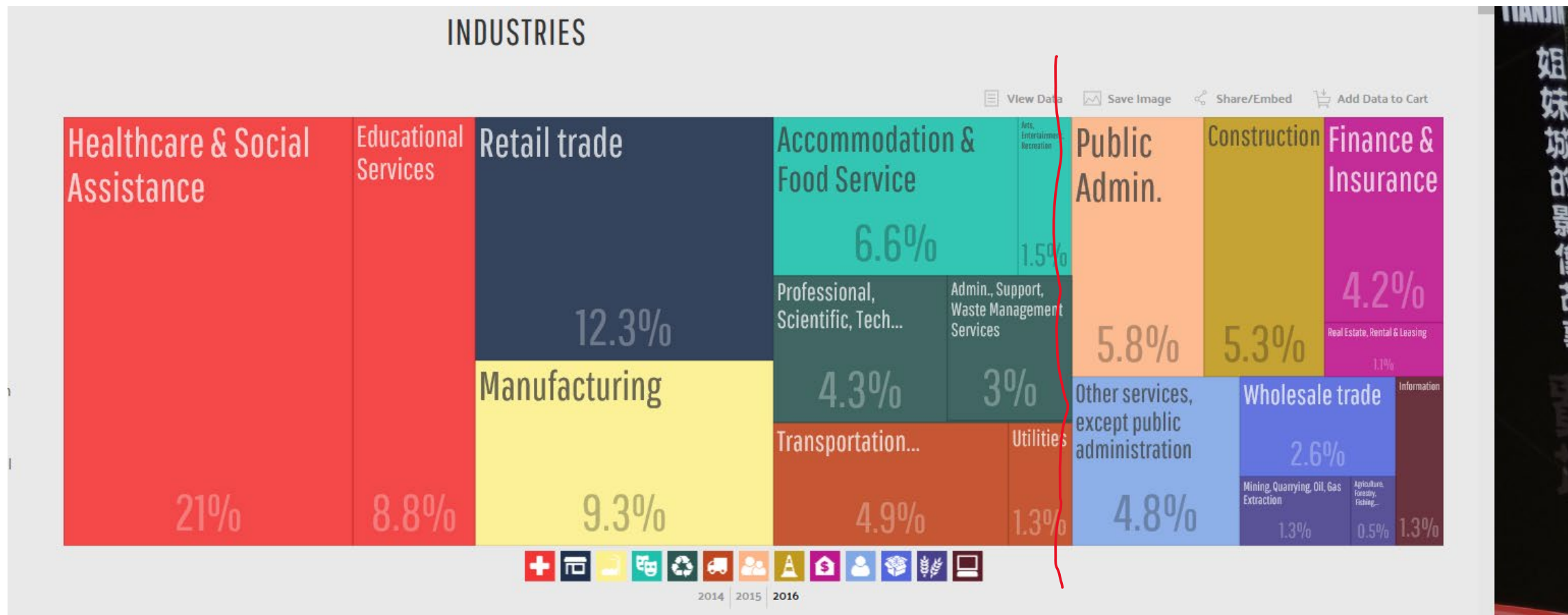
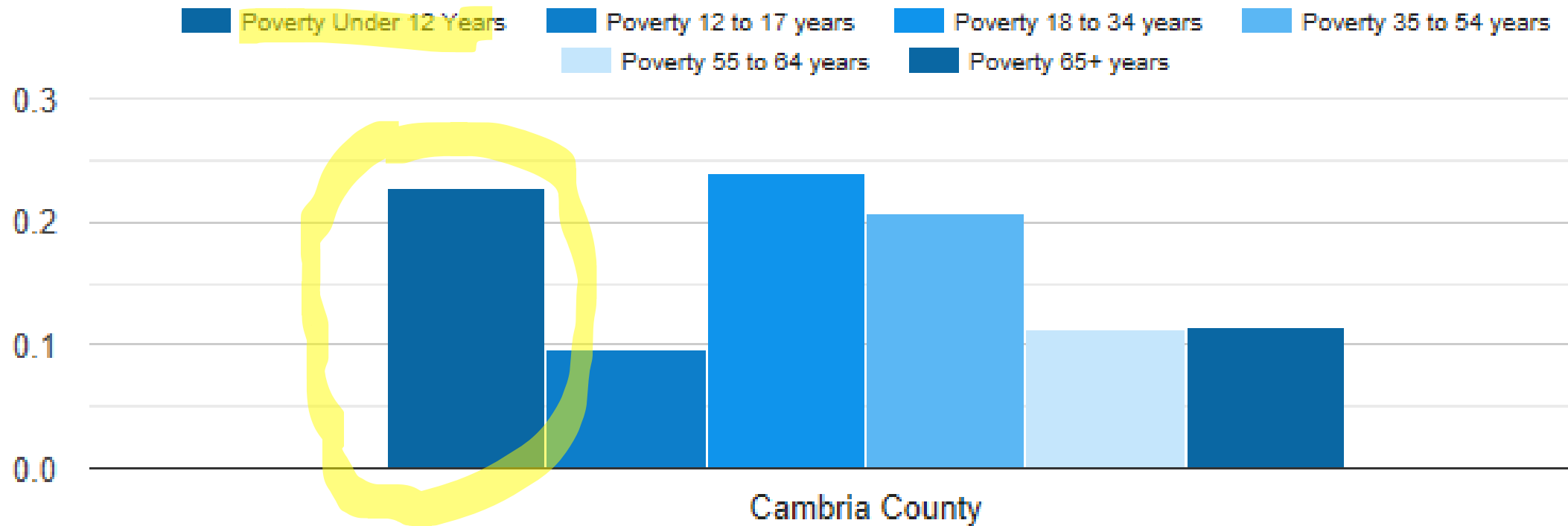


Figure 25: Cambria County, PA Poverty Break Out by Age Group



6500

shutterstock.com • 1203864949

Poverty Hurts

- Poverty was associated with smaller white and cortical gray matter and hippocampal and amygdala volumes.
- The effects of poverty on hippocampal volume were mediated by caregiving support/hostility on the left and right as well as stressful life events on the left. These are the parts of the brain that become the manage stress regulation and emotional processing

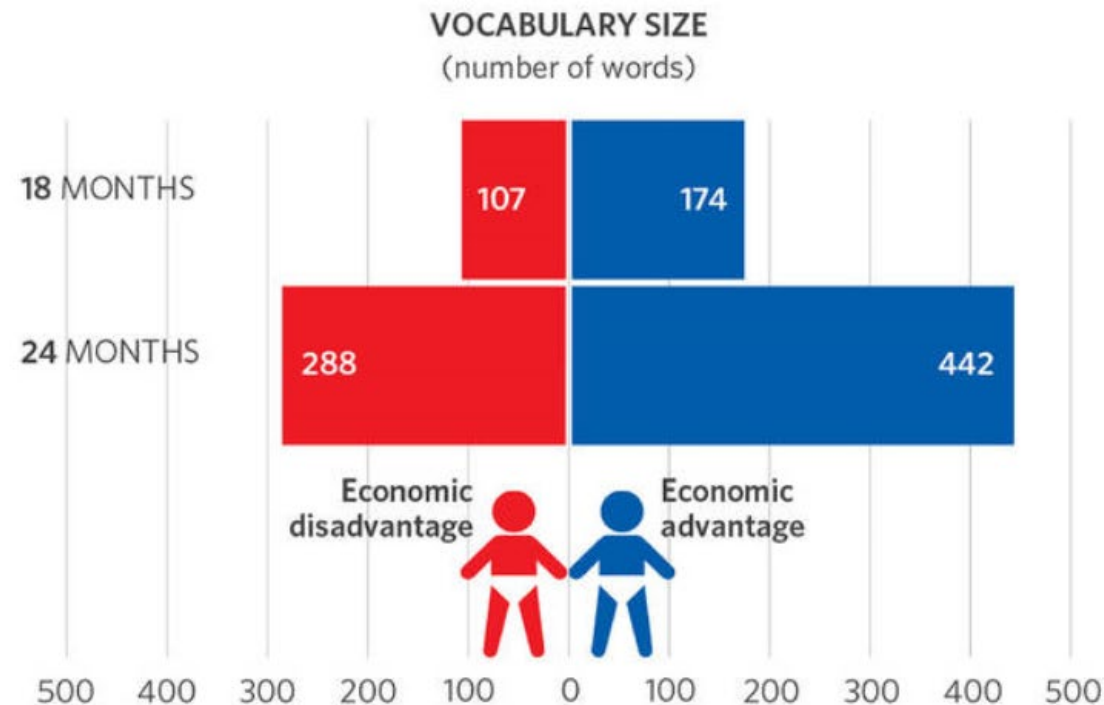
• Source: JAMA Pediatric Luby et. all, University of Washington, Medical School, 2014

**These Children Hear 30
Million Fewer Words**

By AGE 3

Gaps in development appear before children turn 2.

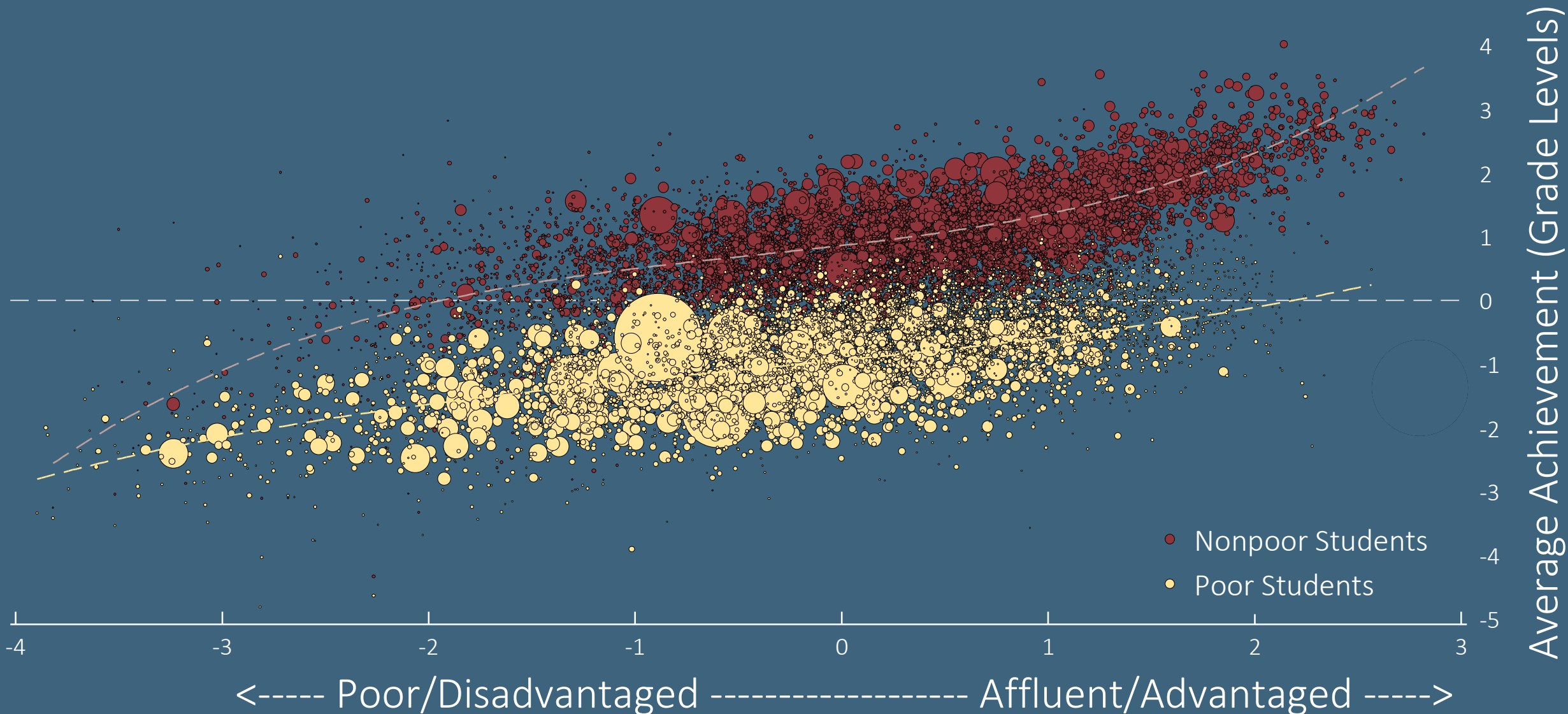
By age 2, children in the lowest socio-economic group are behind their peers in measures of cognitive, language and social-emotional development.
A six-month gap in language skills undermines other learning.



SOURCE: FERNALD, MARCHMAN, & WEISLEDER, 2013

Academic Achievement and Socioeconomic Status, by Poverty Status

US School Districts With 20+ Students of a Given Economic Status, 2009-2013



- 40% of kindergartners are not ready for school
- Greater Johnstown special ed costs rose by 40% since 2011

4

0

%

The Pittsburgh Public Schools found that the early intervention services provided in pre-k eliminated the need for special education services in kindergarten for 42 percent of children. The district estimated that this reduction saved the district \$570,000

High Quality Early Childhood Education cuts special education enrollment by 40-49%

It connects the brain processes

It connects the child to needed services

It connects the child to their learning trajectory

Research has found that upon starting kindergarten, children who completed preschool programs were significantly more advanced in key areas of development—language and literacy, creativity, music and movement, initiative, and social skills. They are more eager to learn and try new things, and they get along better with their classmates

Reading achievement scores were consistently higher for children in early childhood education programs. These effects remained large from primary school through age. Mathematics achievement also showed a similar pattern

★ ★ ★ ★ ★
MISSION: READINESS
MILITARY LEADERS FOR KIDS

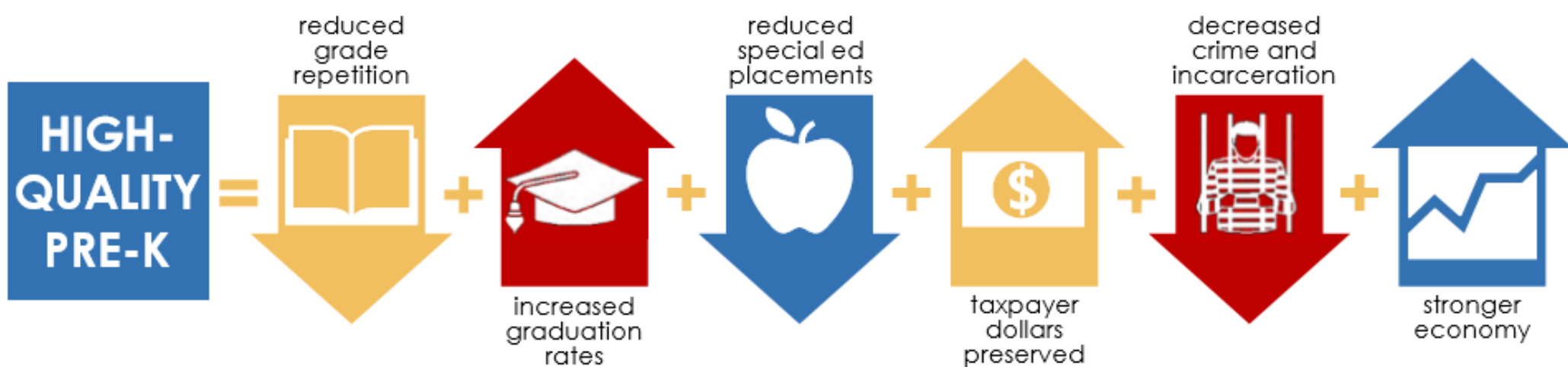
**PRE-K
FOR
PA**
READY TO SUCCEED



THE MILITARY GETS IT

High-quality pre-kindergarten is crucial for youth readiness and a centerpiece of the military's child development system.

 prekforpa.org  facebook.com/prekforpa  twitter.com/prek4pa





**PRE-K
FOR PA**
READY TO SUCCEED
AN INITIATIVE OF THE TEXAS EDUCATION AGENCY

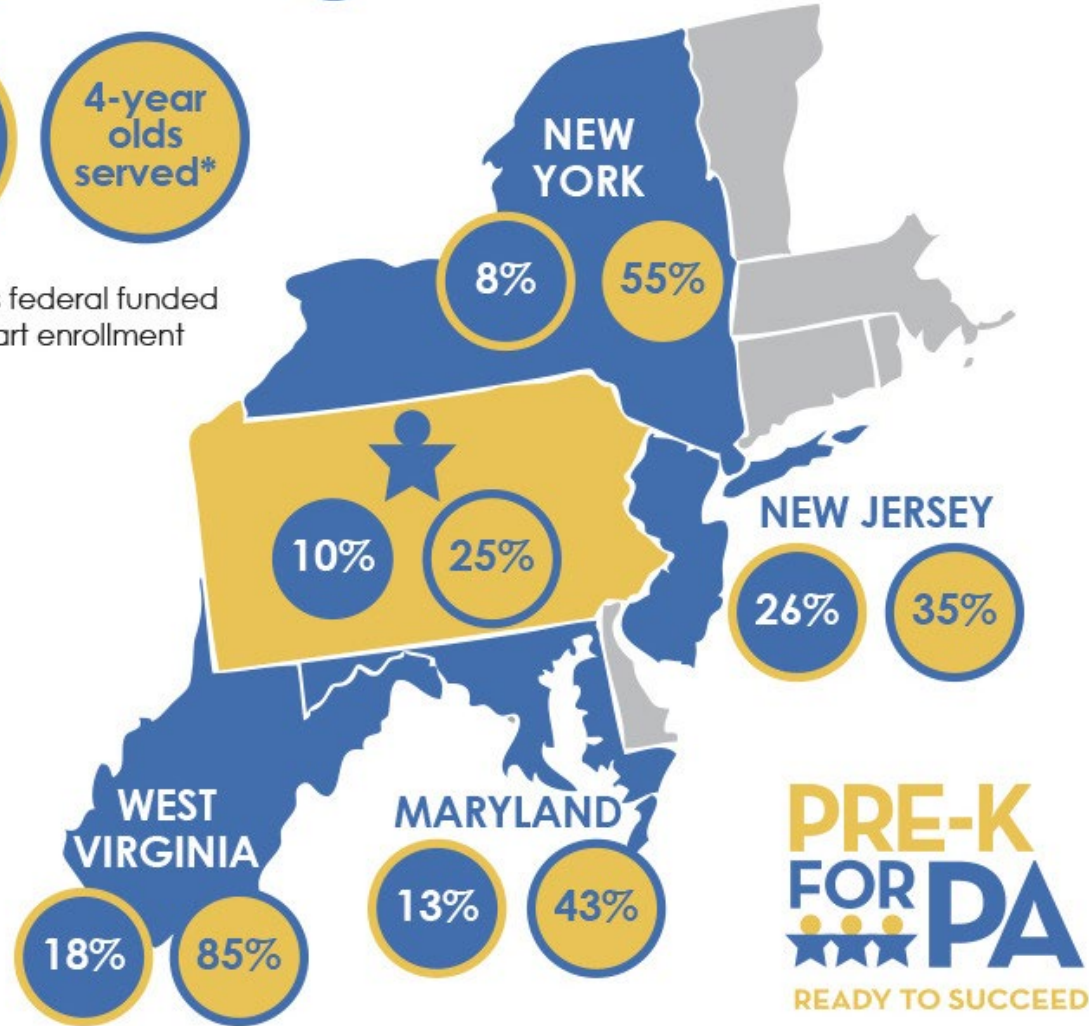
WHY NOT ME?
CLICK HERE if you think all kids should be ready to learn

Neighboring States

3-year
olds
served*

4-year
olds
served*

* Includes federal funded
Head Start enrollment



IMPORTANCE OF
HIGH-QUALITY, PUBLICLY FUNDED PRE-K
Cambria County

55% of eligible children do not have access

2,015

eligible children ages 3-4
live in this county

1,117

eligible children
DO NOT have access

33

pre-k locations
eligible* to participate

24

high-quality pre-k
participating providers

56 additional pre-k classrooms needed

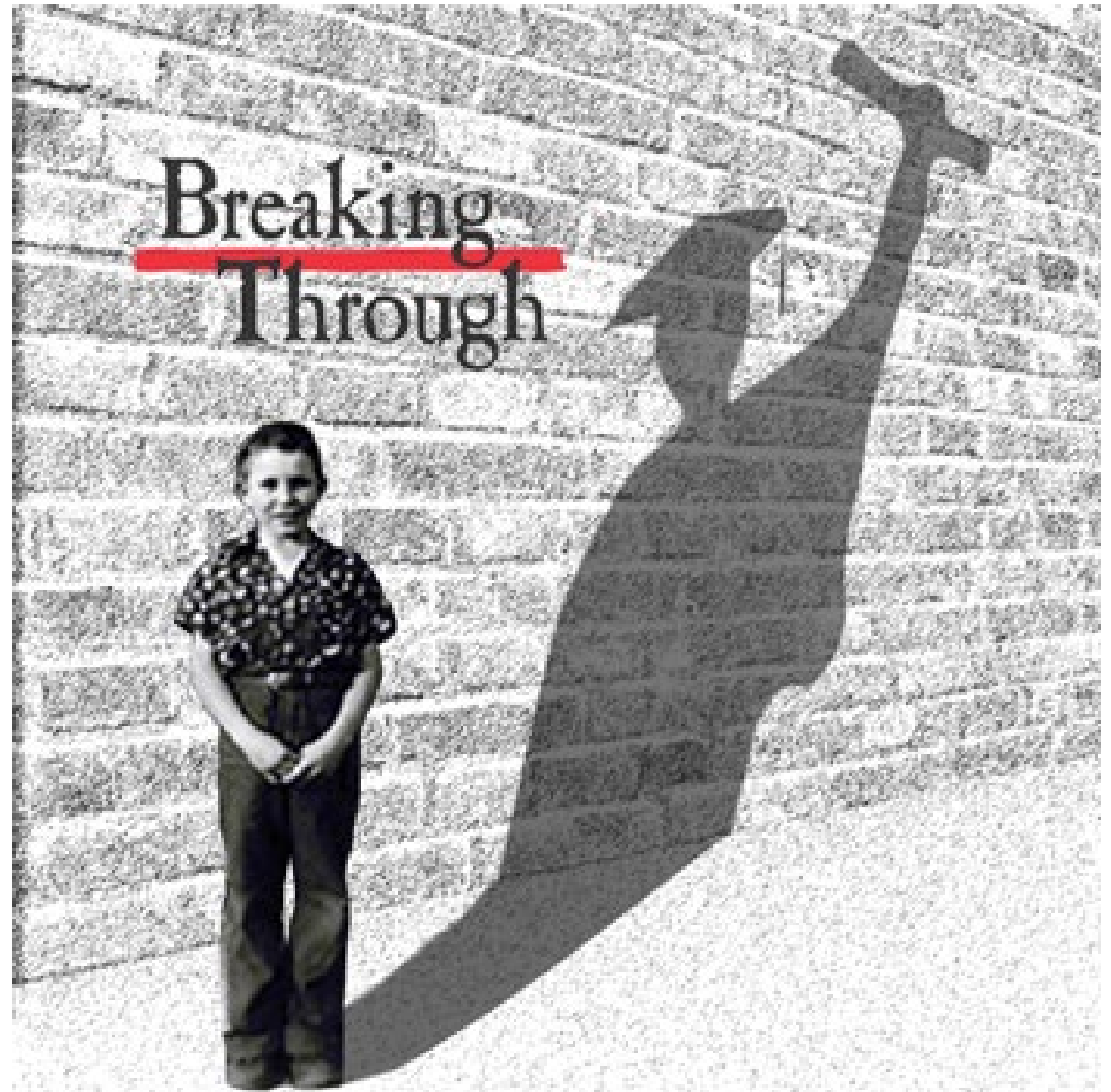
Cambria County Child Care Needs

	Under 5 years	Infants and toddlers
Eligible children	2,190	1,270
Eligible children enrolled	414	218
Unserved, eligible children	1,776	1,052
	81% unserved	83% unserved

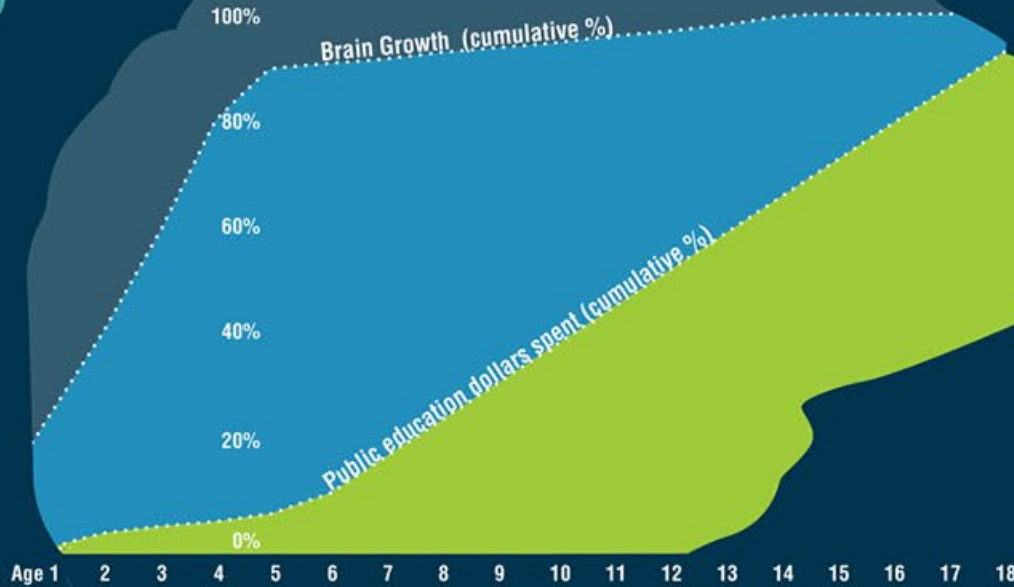


Only 32%
of the Child
Care
Capacity in
Cambria
County is
High
Quality

1776 Children
Could Be Your
First Cohort to
Break The Trend



Starting Smart



85% of brain development occurs before the age of 5, but only 14% of public education dollars are spent on early childhood education in the U.S.

Every \$1 invested in early childhood education can save \$7 in the long-term through reduced costs associated with remedial education, criminal justice and welfare payments.



A recent report by *America's Edge* showed that for every \$1 invested in early education in New York State an additional \$1.86 is generated in economic activity. On Long Island, that number is \$1.92.

Investment in early childhood education:



Resulting economic activity in NY State:



Resulting economic activity on Long Island:



[https://www.bing.com/videos/search?q=video+brain+development+
&view=detail&mid=D1F153B7C16B45B2D7CDD1F153B7C16B4
5B2D7CD&FORM=VIRE&ajf=100](https://www.bing.com/videos/search?q=video+brain+development+&view=detail&mid=D1F153B7C16B45B2D7CDD1F153B7C16B45B2D7CD&FORM=VIRE&ajf=100)



All I really need to
know I learned in
~~kindergarten~~ *Early
Childhood
Education*

The Power to Change Your Future

In 2016, Nobel Winner for Economics found that there are two very different types of optimism,” [he wrote](#).

“Complacent optimism is the feeling of a child waiting for presents.

Conditional optimism is the feeling of a child who is thinking about building a treehouse. ‘If I get some wood and nails and persuade some other kids to help do the work, we can end up with something really cool.’”

“We make progress because of things that people do,” he wrote. “We should encourage people to do a lot more of whatever it is that they are doing to generate progress.”

QUALITY EARLY CHILDHOOD DEVELOPMENT PRODUCES LONG-TERM BENEFITS

- Cognitive Skills
- Social-Emotional Skills
- Earnings
- Inequality

James Heckman and Paul Gertler et al.

Labor Market Returns to an Early Childhood Stimulation Intervention in Jamaica

LEARN MORE AT HECKMANEQUATION.ORG