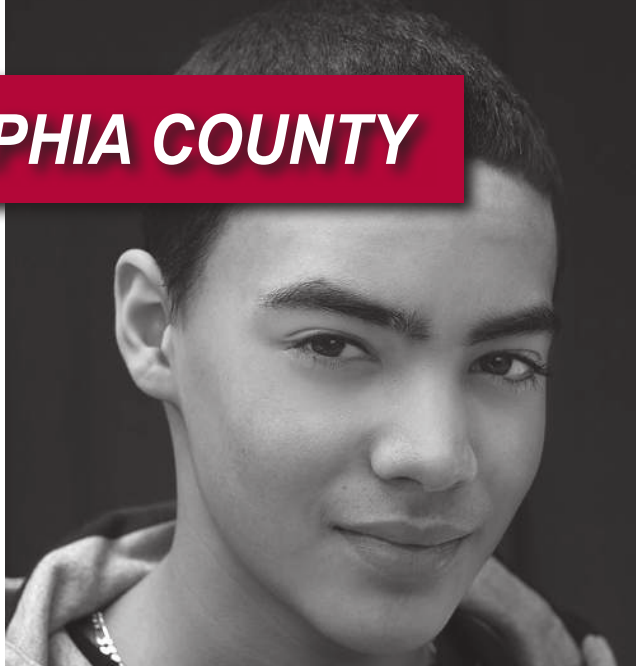


PHILADELPHIA COUNTY



WHERE TO GO FOR HELP



A Guide to Outpatient Behavioral Health Services for
Philadelphia County's Children and Adolescents
Enrolled in Medical Assistance and CHIP



A PUBLICATION OF:

Public Citizens for Children and Youth

TABLE OF CONTENTS

SECTION 1: *Introduction*

| | |
|---|---|
| What is a Behavioral Health Issue | 1 |
| Who Will Help My Child..... | 1 |
| My Child Needs Help. What Do I Do | 2 |

SECTION 2: *Types of Care*

| | |
|--|---|
| I Have Called A Behavioral Health Provider. What Happens Next | 3 |
| What Are Behavioral Health Services | 3 |
| What Is The Difference Between Outpatient And Community-Based Services | 3 |

SECTION 3: *School-Based Services*

| | |
|---|---|
| What Are The School-Based Services | 4 |
| What's Available For Youth In High School | 4 |
| How Can My Child Get These Services..... | 5 |
| Do I Have To Pay For These School-Based Services..... | 5 |

SECTION 4: *Paying for Care*

| | |
|---|---|
| How Do I Pay For Care For My Child | 6 |
| Can My Child Get Services Even Without Health Insurance | 7 |

SECTION 5: *What Can I Expect Of These Services?*

| | |
|--|---|
| How Long Will My Child Wait To Access These Services..... | 8 |
| Do I Need To Give Permission For My Child To See A Therapist | 8 |
| What If I Am Unhappy With My Child's Behavioral Health Provider Or Their Care Plan.. | 8 |
| If Your Child Is Getting Outpatient Or Community-Based Services | 8 |
| If Your Child Is Getting School-Based Services..... | 9 |
| What If I Need Help Getting My Child To Therapy | 9 |

SECTION 6: *What Will Be Expected Of Me?*

| | |
|--|----|
| What Will Be Expected Of Me While My Child Is Getting Behavioral Health Help | 17 |
|--|----|

SECTION 7: *Special Services*

| | |
|--|----|
| What Should I Do In An Emergency..... | 18 |
| What Resources Are Available For Trauma | 18 |
| What Resources Are Available For Drug And Alcohol Treatment For Children And Teens ... | 18 |

SECTION 8: *Other Resources*

19

SECTION 9: *Glossary*.....

20

SECTION 1: INTRODUCTION

These are common issues. In Philadelphia, about 1 in 5 children has behavioral health issues. You are not alone. Help is available for your child at home, in school, or in the community.

WHAT IS A BEHAVIORAL HEALTH ISSUE?

A behavioral health issue is the way someone thinks, acts, or feels that gets in the way of his/her daily life. Most people struggle with the way they think, act, or feel at times. When these issues come all of a sudden or they do not go away, it may be a sign that your child needs help.

Some common behavioral health issues in children are:

- ADHD – Attention Deficit Hyperactivity Disorder
- Anxiety
- Depression
- Autism

WHO WILL HELP MY CHILD?

Behavioral health providers are people who are trained to care for behavioral health issues. Behavioral health providers come from many different backgrounds. Your child can see more than one behavioral health provider at a time. All of the behavioral health providers that work with your child are part of your child's care team.

You are your child's strongest advocate, and you can lead your child's care team. If you need some help or advice on how to do this you can call Parents Involved Network (PIN), a parent support group in Philadelphia, at (267) 507-3860.

Most children will work with these behavioral health providers:

1. Therapist

A therapist can be a psychologist or a social worker. The therapist will meet most often with your child and will give your child the most support. The therapist will also be your main contact.

2. Psychiatrist

A psychiatrist is the medical doctor on your child's care team. The psychiatrist is usually the one who prescribes medications, if they are needed.

Other professionals can be part of your child's care team. These include nurses, teachers, or your child's primary care doctor. By having these other people who know your child on the care team, it can help everyone understand what the main issues really are, and what kind of help is best.





Your child has talents and skills, and your family has qualities that make it strong and special. Your care team should always make sure that these special skills are talked about and used to help make your child and family stronger.

MY CHILD NEEDS HELP. WHAT DO I DO?

The first thing you should do is get your child health insurance

If you do not have health insurance, call Public Citizens for Children and Youth at (215) 563-5848 x17 for help.

Some people are denied health insurance or are told that they are “not eligible.” If this has happened to your child, you can still get help. You can find agencies that take uninsured children in the red pages in this guide. Look for agencies that have free services or a “sliding scale fee.” A sliding scale fee is a small fee that you will be asked to pay for the services.

If you do have health insurance, there are different ways to find a behavioral health provider.

1. You can call your insurance company.
 - a. If you have Medical Assistance, call Community Behavioral Health (CBH) at 1 (888) 545-2600.
 - b. If you have CHIP or private insurance, call the number on the back of your insurance card.
2. You can go to the red pages in this guide for a list of agencies in your area.
3. You can go to the back pocket for a list of providers in your schools.
4. You can also ask your child’s doctor, school nurse, or school counselor for help.

When you call a behavioral health provider, you need to ask if they still take your insurance. Also, be ready to set up your first appointment when you call. Some providers may not be able to see your child right away. You can call different providers to find the appointment that works best for you. But, you should only keep one appointment. Cancel any appointments that you do not need.

SECTION 2: TYPES OF CARE

I'VE CALLED A BEHAVIORAL HEALTH PROVIDER. WHAT HAPPENS NEXT?

When you call a behavioral health provider, you will make an intake appointment. At the intake appointment, the behavioral health provider will do an evaluation of your child. The behavioral health provider may also speak with you. You may be asked how your child deals with other people, how your child has been acting, and about your child's physical health. All of this information will help decide what care is best for your child.

WHAT ARE BEHAVIORAL HEALTH SERVICES?

Behavioral health services are the types of help your child can get for his or her behavioral health issues. There are many types of behavioral health services. The most common types of behavioral health services are outpatient and community-based.

WHAT IS THE DIFFERENCE BETWEEN OUTPATIENT AND COMMUNITY-BASED SERVICES?

One of the differences between these services is where the care takes place.

Outpatient services will take place in your behavioral health provider's office. So, you will go to the provider for your appointments. Outpatient services can include:

- Individual counseling, where your child works one-on-one with his/her therapist
- Group counseling, where your child gets to work with the therapist and other children who have similar needs
- Family counseling, where your whole family works with the therapist

Community-based services come to you. They give your child support at home and at school. Common types of community-based services are:

• Wraparound

Wraparound gives your child help where he/she needs it. This can be both at home and at school. A wraparound team is made up of three workers, and depending on your child's needs, he/she will get one or more of these services:

- 1. Behavior Specialist Consultant** – figures out the best plan for your child's care.
- 2. Therapeutic Staff Support** – gives your child one-on-one help in school.
- 3. Mobile Therapist** – gives therapy to your child and family.

• School-based services: see section 3 for more information

Children who get community-based services must have Medical Assistance. These services must also be ordered by a psychologist or psychiatrist. To learn more about how to get these services for your child, call Community Behavioral Health at 1 (888) 545-2600 or talk to your child's behavioral health provider.

SECTION 3: SCHOOL-BASED SERVICES

WHAT ARE THE SCHOOL-BASED SERVICES?

There are several school-based services in the School District of Philadelphia. Each school has different services. For a list of services in the schools, see the handout in the back pocket of this guide.

THE MOST COMMON SCHOOL-BASED SERVICES ARE:

WRAPAROUND (OR BEHAVIORAL HEALTH REHABILITATION SERVICES)

Wraparound gives children help both in school and at home. The Therapeutic Staff Support (TSS) is the Wraparound worker who will give a child one-on-one help in the classroom. TSS is available to students through highschool but mostly works with children in kindergarten-8th grade.

SCHOOL THERAPEUTIC SERVICES (STS):

STS includes both individual support and group therapy for children. Children who are in kindergarten-8th grade can get STS.

STS HAS THREE PARTS:

- 1. Lead Clinician** – this worker gives children therapy at school.
- 2. Behavioral Health Worker** – this worker gives children help in the classroom.
- 3. Group Mobile Therapy** – this is where a group of children with behavioral health needs get to work together

CHILDREN ACHIEVING THROUGH RE-EDUCATION (CARE)

CARE gives children the most help in school. For this service a child leaves his/her school and goes to a classroom with other children who have similar behavioral health needs. A teacher and at least one therapist works with each CARE class. CARE is for children in 2nd-7th grades.

The CARE classes are not in every school in Philadelphia. A child might have to go to a different school if he/she is put into a CARE class. There is transportation that can help children get to the new school. To find out what schools have CARE classes, please see the hand-out in the back pocket.

WHAT SCHOOL-BASED SERVICES ARE THERE FOR MY YOUTH IN HIGH SCHOOL?

Most of the school-based services focus on children in kindergarten-8th grade. When a student enters high school, there are school counselors that he/she can see. There are also many outpatient services for teens. For a list of outpatient services, go to the red pages in this guide. You can also contact your school's Resource Specialist. The Resource Specialist will be able to help you find outpatient services for your child.

If your child goes to Frankford High School, there is an Outpatient Clinic that he/she can go to. For more information about the Outpatient Clinic at Frankford High School, go to the page in the back pocket of this guide.

HOW CAN MY CHILD GET THESE SERVICES?

If your child already has a therapist, talk to him to see if school-based services could be good for your child.

You can also ask for help from your child's school. Contact the school's CSAP coordinator, school counselor, or principal. The school will use CSAP to figure out if your child needs school-based care.

WHAT IS CSAP?

CSAP is the Comprehensive Student Assistant Process (CSAP). CSAP is there to help any student who is having trouble at school.

CSAP has three levels, or tiers. The type of care a child gets is based on the level he/she is in.

Tier 1. This level of CSAP works on helping the child in a group of children with similar issues, in the classroom. The child's teacher will meet with other teachers to make a plan for how to best help each child.

Tier 2. This level of CSAP gives more individual help to a child. The school counselor will set up a meeting with you, your child's teacher, and other school staff, such as the nurse. All of you will work together to create a plan to help your child. A second meeting should take place in 30 days. This will give you the chance to find out how your child is doing. If this meeting does not take place in 30 days, you should ask the school counselor to set up a meeting.

Tier 3. This level of CSAP has the most support for a child. At this level, the school counselor will ask for special services for your child. This could be making an Individualized Education Plan (IEP) for your child or moving him/her to a CARE class.

You can also skip CSAP and ask for an evaluation done by a school psychologist, of your child right away. This evaluation will find out what services would best help your child. You should ask for this evaluation if your child is often having problems at school, such as being sent home a lot of the time. Contact the principal and the school's special education director to ask for an evaluation. When you ask for an evaluation, you will have to sign a form that gives the school permission to do the evaluation. The school has 60 days to do the evaluation after you sign the form.

DO I HAVE TO PAY FOR THESE SCHOOL-BASED SERVICES?

No, you do not have to pay for any services your child gets at school. These services are paid for by Medical Assistance (MA). So, your child needs to have MA to get these services.

Children with CHIP or private insurance may still be able to get these services. Children with private insurance can have MA at the same time. Children with CHIP may be able to switch to MA. Call PCCY at (215) 563-5848 x17 for more information.

SECTION 4: PAYING FOR CARE

HOW DO I PAY FOR CARE FOR MY CHILD?

In most cases, your child's health insurance will pay for his/her care.

1. Medical Assistance (MA)

Children who have MA can get all “medically necessary” behavioral health services for free. Services are called “medically necessary” when a doctor orders them. In Philadelphia, Community Behavioral Health pays for behavioral health services for people with MA. You can call Community Behavioral Health at 1 (888) 545-2600.

2. CHIP – Children's Health Insurance Program

CHIP is Pennsylvania's health insurance program for uninsured children and teens. You may be charged monthly fees and co-payments based on your income.

In Philadelphia, CHIP insurance is provided through 4 different health insurance companies. These 4 companies are listed below.

Two of these companies use another company to manage their behavioral health services. The phone numbers for more information about their behavioral health services are also listed below.

- **Aetna:** 1 (800) 755-2422
- **UnitedHealthcare:** 1 (800) 414-9025
- **Kidz Partners (through CompCare):** 1 (877) 710-8222
- **Kidz Partners' Special Needs Unit:** 1 (866) 500-4571 [has case managers to help members access special needs services]
- **Keystone Health Plan East (through Magellan):** 1 (800) 688-1911



3. Private Insurance

Most people get private insurance through their jobs. Here is a list of the common types of private insurance in our area. Call the provided phone numbers for more information about their behavioral health services.

- **Aetna:** 1 (800) 424-1580
- **Cigna:** 1 (800) 926-2273
- **Independence Blue Cross (Personal Choice):** 1 (800) 626-8144
- **Oxford:** 1 (800) 201-6991
- **TRICARE (Health Net):** 1 (877) 874-2273
- **United Behavioral Health Care:** 1 (800) 562-2532

You can also call the member services number on the back of your insurance card. Member services will be able to tell you what kinds of behavioral health services your insurance covers and they can provide a list of providers who accept your insurance.

CAN MY CHILD GET SERVICES EVEN WITHOUT HEALTH INSURANCE?

Children who do not have health insurance can get services at one of the Community Mental Health Centers. These centers have free or very low cost behavioral health care for people who are not eligible for insurance or are uninsurable due to immigration status. They will help anyone who lives in Philadelphia. Go to the red pages to find these health centers.

If you are denied services at any of the Community Mental Health Centers because you do not have insurance, call the Department of Behavioral Health and Intellectual disAbility Services at (215) 685-5400. Please have the name of the person denying you an appointment and the date you called the center.

Remember – most children in Philadelphia can get health insurance. If your child does not have health insurance, you can call PCCY's confidential Child Health Watch Helpline at (215) 563-5848 x17. PCCY can help you apply for insurance over the phone. You can also contact your neighborhood County Assistance Office (welfare office). If you have Internet access, you can apply for health insurance on COMPASS at www.compass.state.pa.us.



SECTION 5: WHAT CAN I EXPECT OF THESE SERVICES?

HOW LONG WILL MY CHILD WAIT TO GET THESE SERVICES?

If your child has Medical Assistance, behavioral health providers must see your child within 7 days. If your child needs urgent care, the provider must see him/her within 24 hours. If it is an emergency, you can take your child to the city's behavioral health emergency room. See page 18 for more information.

Some behavioral health agencies may not be able to see your child within 1 week. But do not give up and do not get discouraged. Try calling other agencies to find out if they can see your child sooner. If you still are having a hard time getting your child seen by a behavioral health provider, call PCCY at (215) 563-5848 x17 for help.

DO I NEED TO GIVE PERMISSION FOR MY CHILD TO SEE A THERAPIST?

If your child is under the age of 14, you will need to give permission before he/she can start to get care. Children who are age 14 or older and have Medical Assistance or CHIP do not need your permission to get care. However, some behavioral health providers may ask that you give permission before they will begin to help your child, even if he/she is 14 or older.

WHAT IF I AM UNHAPPY WITH MY CHILD'S BEHAVIORAL HEALTH PROVIDER OR THEIR CARE PLAN?

If your child is getting outpatient or community-based services:

You have the right to ask for your child to see a different therapist or go to a different behavioral health provider. Before you ask for this change, you should try talking with the current therapist. You can tell him/her about your worries, and see if the therapist can make changes without getting in the way of your child's care.

If there is a more serious problem, you can also file a complaint with the behavioral health provider. If the problem is not fixed, you can file a complaint with your behavioral health insurance company. You will need to call your insurance company and ask them how to file the complaint.

If your child has Medical Assistance, you can also call Philadelphia's Office of Mental Health at (215) 685-5400. When you call, ask for a children's program representative.

If your child is getting school-based services:

You should talk about your worries with your child's care team. You have the right to ask for this team meeting at any time. You should contact the school counselor or principal to arrange the team meeting. The team meeting should include all of the school staff who are involved in your child's care.

If your child has an Individualized Education Plan (IEP), you should contact the special education director at your child's school. The special education director is in charge of the care of children who have IEPs, and should be your main contact person in the school if you have any worries. If you have any more concerns about your child's IEP, you should contact the Mental Health Association of Southeastern PA at (215) 751-1800 or the Disability Rights Network at 1 (800) 692-7443.

WHAT IF I NEED HELP GETTING MY CHILD TO THERAPY?

If your child has Medical Assistance, you can get help. The Medical Assistance Transportation Program either gives you free rides to your child's appointments or repays you for what it costs to get your child to his/her appointments.

In order to use the Medical Assistance Transportation Program, you must:

1. Have an ACCESS card, which you get from the Pennsylvania Department of Welfare.
2. Fill out Section I of the Medical Assistance Transportation Program Application and have your doctor fill out and sign Section II

For more information about this program, call LogistiCare at 1 (877) 835-7412. You can also get more information at <http://matp.pa.gov>.



WHERE TO GO FOR HELP

| No | Name | Location | Phone/Website | Insurance | Services |
|---|---|---|--|--|--|
| Outpatient/Community-Based Services in Philadelphia | | | | | |
| Service Codes: Counseling—I-Individual; F-Family; G-Group; P-Psychiatrist; CB-Community-based; SA-Sexual abuse; B-Bereavement; Play-Play therapy; FB-Family-based; W-Wraparound; D&A-Drug&alcohol Note: Philadelphia County contracted agencies are in bold and provide services to any Philadelphia County Resident, whether insured or uninsured. | | | | | |
| 1 | Delaware County Professional Services | 1420 Walnut St. 19102 | (610) 892-3800 www.dcpsonline.com | CHIP Private | Counseling: I, F, G SA, B, Play |
| 2 | JFK Community Mental Health/ Mental Retardation Center | 112 N. Broad St. 19102 | (215) 568-0860 www.jfkmhmr.org | Medical Assistance Private Sliding scale fee | Counseling: I, F P, W, FB, D&A, SA, B, Play |
| 3 | Philadelphia Consultation Center | 313 S. 16th St. 19102 | (215) 732-8244 www.pcctherapy.com | Medical Assistance CHIP Private Sliding scale fee | Counseling: I, F, G P, CB, FB, D&A, SA, B, Play |
| 4 | Harmony Mental Health Services, Inc. | 2400 Chestnut St. 19103 | (215) 568-5900 www.harmonyprofessionalcoun- seling.com | CHIP Private | Counseling: I, F P, B, Play |
| 5 | The Consortium, Inc. | 26 S. 40th St. 19104 | (215) 596-8300 www.consortium-inc.org | Medical Assistance CHIP Private Sliding scale fee | Counseling: I, F, G P, CB, FB, D&A |
| 6 | Elwyn | 4040 Market St. 19104 | (215) 895-5588 www.elwyn.org | Medical Assistance | Counseling: I, F P |
| 7 | Intercultural Family Services, Inc. | 4254-56 Chestnut St. 19104 | (215) 386-8490 www.ifsinc.org | Medical Assistance Sliding scale fee | Counseling: I, F, G P, W, FB, Play |
| 8 | Bethanna Community Services | 1212 Wood St. 19107 | (215) 335-6500 x206 www.bethanna.org | Medical Assistance CHIP Sliding scale fee | Counseling: I, F P, W, SA, B, Play |
| 9 | Children's Service, Inc. | 1315 Walnut St. Suite 200 19107 | (215) 670-5952 www.cschild.org | Medical Assistance Private Sliding scale fee | Counseling: I, F, G P, W, SA, B, Play |
| 10 | Hall Mercer Child & Family Outpatient Services | 245 S. 8th St. 19107 | (215) 829-5554 | Medical Assistance Sliding scale fee | Counseling: I, F P, CB, B, Play |
| 11 | Jefferson University Outpatient Services | 833 Chestnut St., Suite 210 19107 | (215) 955-8291 | Medical Assistance | Counseling: I, F P |
| 12 | Philadelphia Mental Health Center | 1235 Pine St. 19107 | (215) 735-9379 www.philamentalhealth.org | Medical Assistance Private | Counseling: I, F P, CB, W |
| 13 | CORA Services, Inc. | 8540 Verree Rd. 19111 | (215) 342-7660 www.coraservices.org | CHIP Private Sliding scale fee | Counseling: I, F, G CB, W, FB, D&A, B |
| 14 | Northeast Community Mental Health Centers | 2152 N. Front St. 19122 | (215) 291-4357 www.ncmhc.com | Medical Assistance | Counseling: I, F, G P, FB, SA, B, Play |

| No | Name | Location | Phone/Website | Insurance | Services |
|----|--|---|--|--|---|
| 15 | Children's Crisis Treatment Center | 417 N. 8th St. Suite 402 19123 | (215) 496-0584; (215) 496-0707 www.cctckids.org | Medical Assistance CHIP Private | Counseling: I, F P, CB, W, FB, SA, B, Play |
| 16 | Eleventh Street Family Health Services | 850 N. 11th St. 19123 | (215) 769-1103 www.fpcn.us | Medical Assistance Sliding scale fee | Counseling: I, F, G P, CB, B, SA, Play |
| 17 | JFK Poplar Clinic | 321 W. Girard Ave. 19123 | (215) 235-6250 www.jfkmhmr.org | Medical Assistance Sliding scale fee | Counseling: I, F P, CB, SA, B, Play |
| 18 | NorthEast Treatment Centers | 493 N. 5th St. Suite D 19123 | (215) 408-4944 www.netcenters.org | Medical Assistance Sliding scale fee | Counseling: I, F P, W, FB, Play |
| 19 | Best Behavioral Healthcare, Inc. | 5043 Frankford Ave. 19124 | (215) 744-4343 x0 | Medical Assistance CHIP Private | Counseling: I, F P, CB, SA, B, Play |
| 20 | Greater Philadelphia Health Action | 4510 Frankford Ave. 2nd Fl. 19124 | (215) 831-9882 www.gphainc.org | Medical Assistance CHIP Private Sliding scale fee | Counseling: I, F, G P, D&A, SA, B, Play |
| 21 | NHS, Human Services | 265 E. Lehigh Ave. 19125 | (215) 427-1500 www.nhsonline.org | Medical Assistance CHIP and Private (Aetna only) | Counseling: I, F P, CB, W, B, Play |
| 22 | Shalom, Inc. (Ages 8+) | 1080 N. Delaware Ave., # 602 19125 | (215) 425-7727 www.shalominc.com | Medical Assistance Private | Counseling: I, F, G P, CB, D&A, SA, B, Play |
| 23 | Wedge Medical Center | 6701 N. Broad St. 19126 | (215) 276-3922 | Medical Assistance | Counseling: I, F P, SA, B |
| 24 | Intercommunity Action, Inc. (Interac) | 6122 Ridge Ave. 19128 | (215) 487-1330 www.intercommunityac- tion.org | Medical Assistance CHIP Private Sliding scale fee | Counseling: I, F, G P, CB, W, D&A, SA, B, Play |
| 25 | Northern Home for Children | 5301 Ridge Ave. 19128 | (215) 482-1423 www.northernhome.org | Medical Assistance | Counseling: I, F, G P, W, SA, B, Play |
| 26 | Resources for Human Development | 90 Rochelle Ave. 19128 | (215) 508-3300 www.rhd.org | Medical Assistance | Counseling: I, F P, W, Play |
| 27 | Interface Psych Services Inc. | 2401 Pennsylvania Ave., Suite 1 A 2 19130 | (215) 866-5331 www.interfacepsych.com | CHIP Private | Counseling: I, F, P, CB, SA, B, Play |
| 28 | Belmont Center for Comprehensive Treatment | 4200 Monument Rd. 19131 | 1 (800) 220-4357 | Medical Assistance CHIP Private Sliding scale fee | Counseling: I, F P, SA, B, Play |
| 29 | Community Council | 4900 Wyalusing Ave. 19131 | (267) 295-8850 www.ccmhmr.org | Medical Assistance | Counseling: I, F, G P, CB, W, FB |

| No | Name | Location | Phone/Website | Insurance | Services |
|----|---|----------------------------------|---|---|---|
| 30 | WES Health Center | 2514 N. Broad St. 19132 | (215) 456-2626 www.drwes.org | Medical Assistance Sliding scale fee | Counseling: I, F, G P, CB, W, FB, D&A, Play |
| 31 | COMHAR | 166 W. Lehigh Ave. 19133 | (267) 861-4382 www.comhar.org | Medical Assistance Sliding scale fee | Counseling: I, F, P, CB, W, FB, SA, B |
| 32 | Northeast Community Mental Health Centers | 2927 N. 5th St. 19133 | (215) 291-4357 www.ncmhc.com | Medical Assistance | Counseling: I, F, G P, FB, SA, B, Play |
| 33 | Nueva Vida | 3169 N. 5th St. 19133 | (215) 426-9680 | Medical Assistance | Counseling: I, F P, B |
| 34 | Nueva Vida | 616 W. Lehigh Ave. 19133 | (215) 229-8857 | Medical Assistance | Counseling: I, F P, B |
| 35 | Pan American | 2561 N. Front St. 19133 | (215) 425-8909 | Medical Assistance CHIP | Counseling: I, F P |
| 36 | Citywide Community Counseling | 537 E. Allegheny Ave. 19134 | (215) 291-9500 | Medical Assistance | Counseling: I, F, G P, CB, W, FB, D&A, SA, B, Play |
| 37 | COMHAR | 2055 E. Allegheny Ave. 19134 | (267) 861-4382 www.comhar.org | Medical Assistance | Counseling: I, F, P, CB, W, FB, SA, B |
| 38 | Hispanic Community Counseling Services | 1851 E. Allegheny Ave. 19134 | (215) 291-8154 www.hccsphil.org | Medical Assistance Sliding scale fee | Counseling: I, F, G P, CB, FB, D&A, SA, B, Play |
| 39 | Hispanic Community Counseling Services | 3156 Kensington Ave. 19134 | (215) 291-8154 www.hccsphil.org | Medical Assistance Sliding scale fee | Counseling: I, F, G P, CB, FB, D&A, SA, B, Play |
| 40 | Nueva Vida | 112 E. Allegheny Ave. 19134 | (215) 291-1250 | Medical Assistance | Counseling: I, F P, B |
| 41 | Mednet Healthcare System | 5044 Spruce St. 19139 | (215) 474-4410 www.mednetservices.com | Medical Assistance Sliding scale fee | Counseling: I, F, G P, Play |
| 42 | Asociación de Puertorriqueños en Marcha (A.P.M) Mental Health Clinic | 3263 N. Front St. 19140 | (267) 546-9700 or (267) 546-9701 www.apmphila.org | Medical Assistance | Counseling: I, F, G P, SA, B |
| 43 | Asociación de Puertorriqueños en Marcha (A.P.M) Mental Health Clinic | 4301 N. Rising Sun Ave. 19140 | (267) 296-7220 or (267) 296-7221 www.apmphila.org | Medical Assistance | Counseling: I, F, G P, CB, SA, B |
| 44 | Multicultural Wellness Center | 120 W. Wyoming Ave. 19140 | (215) 324-8190 | Medical Assistance | Counseling: I, F, G P, FB, SA, B, Play |
| 45 | Northeast Community Mental Health Centers | 3805 N. 5th St. 19140 | (215) 291-4357 www.ncmhc.com | Medical Assistance | Counseling: I, F, G P, CB, FB, SA, B, Play |

| No | Name | Location | Phone/Website | Insurance | Services |
|----|---|--|---|--|---|
| 46 | Pan American | 4519 N. 5th St. 19140 | (215) 457-1620 | Medical Assistance CHIP | Counseling: I, F P |
| 47 | Belmont Behavioral Health (Einstein) | 1200 W. Tabor Rd. 19141 | (215) 456-9832 | Medical Assistance CHIP Private | Counseling: I, F P, B, FB, Play |
| 48 | Wedge Medical Center | 4913 N. Broad St. 19141 | (215) 329-3200 | Medical Assistance | Counseling: I,F P, SA, B |
| 49 | WES Health Center | 1315 Windrim St. 19141 | (215) 456-2626 www.drwes.org | Medical Assistance Sliding scale fee | Counseling: I,F, G P, CB, W, FB, D&A, Play |
| 50 | Presbyterian Children's Village | 6517 Chester Ave. 19142 | (610) 525-5400 www.pcv.org | Medical Assistance CHIP (Magellan only) | Counseling: I,F P, SA, B, Play |
| 51 | Greater Philadelphia Health Action | 5501 Woodland Ave. 19143 | (215) 724-4700 www.gphainc.org | Medical Assistance CHIP Private Sliding scale fee | Counseling: I,F,G P, D&A, SA, B, Play |
| 52 | The Health Annex | 6120 B Woodland Ave. 2nd Fl. 19143 | (215) 727-4721 www.fpcn.us | Medical Assistance Sliding scale fee | Counseling: I, F, G P, Play |
| 53 | Abbottsford Falls Family Practice & Counseling | 4700 Wissahickon Ave., Suite 118 19144 | (215) 843-2580 www.fpcn.us | Medical Assistance Sliding scale fee | Counseling: I,F P, FB, SA, B, Play |
| 54 | Juvenile Justice Center of Philadelphia | 100 W. Coulter St. 19144 | (215) 849-2112 x5221 www.juvenilejustice.org | Medical Assistance | Counseling: I,F,G P, W, SA, B, Play |
| 55 | CATCH | 1417 Oregon Ave. 19145 | (215) 218-9499 www.catchinc.com | Medical Assistance | Counseling: I, G, F P, CB, W, B, Play |
| 56 | Intercultural Family Services, Inc. | 2317 S. 23rd St. 19145 | (215) 468-4673 www.ifsinc.org | Medical Assistance Sliding scale fee | Counseling: I, F, G P, W, FB, Play |
| 57 | Greater Philadelphia Health Action AL-Assist Behavioral Health Care Center | 1401 S. 4th St. 19147 | (215) 339-1070 www.gphainc.org | Medical Assistance CHIP Private Sliding scale fee | Counseling: I,F,G P, D&A, SA, B, Play |
| 58 | Wedge Medical Center | 1939 S. Juniper St. 19148 | (215) 271-5822 | Medical Assistance | Counseling: I,F P, SA, B |
| 59 | Center for Family Relationships | 1600 Magee Ave. 19149 | (215) 539-5367 www.cfarcounseling.org | Medical Assistance Sliding scale fee | Counseling: I,F,G P, W, CB, D&A, SA, B, Play |
| 60 | Northeast Community Center for MH/MR | 7226 Castor Ave. 19149 | (215) 831-2863 | Medical Assistance CHIP | Counseling: I, F, G P, FB, Play |
| 61 | SRI Psychological Services | 2824 Cottman Ave., Suite 19 19149 | (215) 885-3337 www.sricanhelp.com | CHIP Private | Counseling: I, F P, Play |

| No | Name | Location | Phone/Website | Insurance | Services |
|----|--|-----------------------------|--------------------------------------|--------------------|---------------------------------------|
| 62 | PATH, Inc. | 8220 Castor Ave. 19152 | (215) 728-4565 www.pathcenter.org | Medical Assistance | Counseling: I, F CB, FB, D&A, B |
| 63 | NHS Human Services Outpatient Clinic - Knights Road | 11082 Knights Rd. 19154 | (215) 632-9040 www.nhsonline.org | Medical Assistance | Counseling: I, F P |
| 64 | SPIN, Inc. | 10521 Drummond Rd. 19154 | (215) 612-7625 www.spininc.org | Private | Counseling: I, F P |

Specialized Services – Trauma

All of the following agencies provide Trauma-Focused Cognitive Behavioral Therapy(TF-CBT), and may provide other evidence-based treatments, as well.

Key:

Types of trauma program addresses:

A-Abuse (physical, sexual and/or emotional)

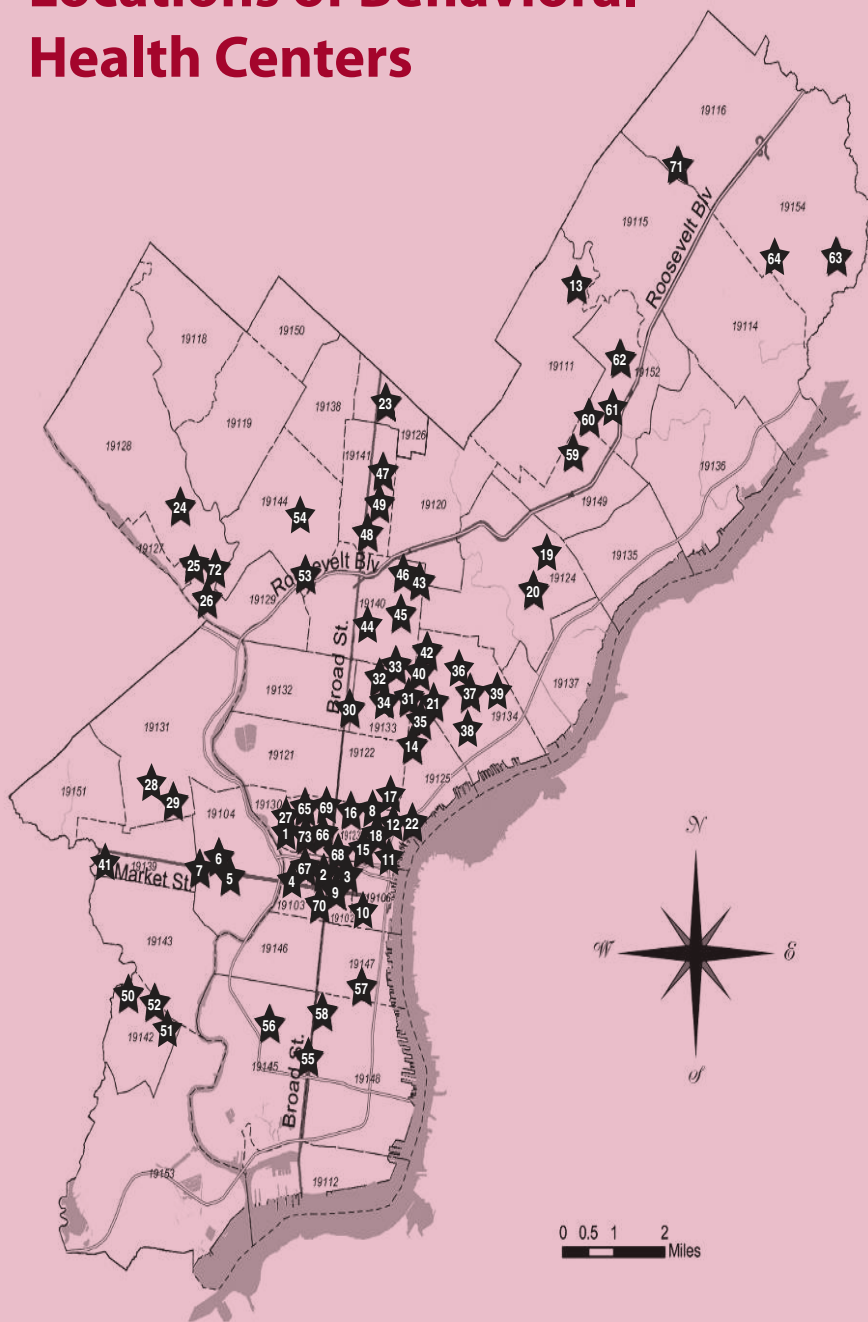
V-Violence (Domestic and/or Community/school)

H- Homicide (lost loved one to homicide, and/or witnessed homicide)

B (Traumatic grief)

| | | | | | |
|----|--|--|---|--|---|
| 65 | Children's Crisis Treatment Center | 1823 Callowhill St. 19103 | (215) 496-0707 www.cctckids.org | Medical Assistance | Sexual trauma; Refugee trauma A, V, H, B |
| 66 | SAFE | 227 N. 18th St. 19103 | (215) 854-7036 | Medical Assistance | Sexual abuse victims; A Counseling: I, F P, Play |
| 67 | Women Organized Against Rape (WOAR) | 1617 JFK Blvd., Suite 1100 19103 | (215) 985-3333 www.woar.org | Free | Sexual abuse victims; Refugee trauma A, V Counseling: I, G, F |
| 68 | Assessment and Treatment Alternatives | 1225 Vine St. 19107 | (215) 405-2100 www.atainc.org | Medical Assistance CHIP Private | Sexual abuse victims; A, V, H, B Play |
| 69 | Penn Center for Youth and Family Trauma Response and Recovery | 245 S. 8th St. 19107 | (215) 829-5467 www.med.upenn.edu/traumare- sponse | Medical Assistance | A, V, H, B Counseling: I, F P, Play |
| 70 | Joseph J. Peters Institute (JJPI) | 100 S. Broad St., Suite 1700 19110 | (215) 701-1560 www.jjp.org | Medical Assistance CHIP Private Sliding scale fee | Sexual trauma Counseling: I, F, G A P |
| 71 | Jewish Family and Children's Services | 10125 Verree Rd. 19116 | (267) 256-2000 www.jfcphilly.org | Sliding scale fee | A, V, H, B Counseling: I, F |
| 72 | Northern Home for Children | 5301 Ridge Ave. 19128 | (215) 482-1423 www.northernhome.org | Medical Assistance | A, V, H, B Counseling: I, F, G P, W |
| 73 | Anti-Violence Partnership of Philadelphia | 2000 Hamilton St. 19130 | (215) 567-6776 www.avpphila.org | Free | Victims of violence A, V, H, B Counseling: I, F, G Play |

Locations of Behavioral Health Centers



Outpatient/Community-Based Services in Philadelphia

- 1 Delaware County Professional Services
- 2 JFK Community Mental Health/
Mental Retardation Center
- 3 Philadelphia Consultation Center
- 4 Harmony Mental Health Services, Inc.
- 5 The Consortium, Inc.
- 6 Elwyn
- 7 Intercultural Family Services, Inc.
- 8 Bethanna Community Services
- 9 Children's Service, Inc.
- 10 Hall Mercer Child & Family Outpatient Services
- 11 Jefferson University Outpatient Services
- 12 Philadelphia Mental Health Center
- 13 CORA Services, Inc.
- 14 Northeast Community
Mental Health Centers
- 15 Children's Crisis Treatment Center
- 16 Eleventh Street Family Health
Services
- 17 JFK Poplar Clinic
- 18 NorthEast Treatment Centers
- 19 Best Behavioral Healthcare, Inc.
- 20 Greater Philadelphia Health Action
- 21 NHS, Human Services
- 22 Shalom, Inc.
(Ages 8+)
- 23 Wedge Medical Center
- 24 Intercommunity Action, Inc. (Interac)
- 25 Northern Home for Children
- 26 Resources for Human
Development
- 27 Interface Psych Services Inc.
- 28 Belmont Center for
Comprehensive Treatment
- 29 Community Council
- 30 WES Health Center
- 31 COMHAR
- 32 Northeast Community
Mental Health Centers
- 33 Nueva Vida
- 34 Nueva Vida
- 35 Pan American
- 36 Citywide Community Counseling
- 37 COMHAR

- 38 Hispanic Community Counseling Services
- 39 Hispanic Community Counseling Services
- 40 Nueva Vida
- 41 Mednet Healthcare System
- 42 Asociación de Puertorriqueños en Marcha
(A.P.M) Mental Health Clinic
- 43 Asociación de Puertorriqueños en Marcha
(A.P.M) Mental Health Clinic
- 44 Multicultural Wellness Center
- 45 Northeast Community
Mental Health Centers
- 46 Pan American
- 47 Belmont Behavioral Health
(Einstein)
- 48 Wedge Medical Center
- 49 WES Health Center
- 50 Presbyterian Children's Village
- 51 Greater Philadelphia Health Action
- 52 The Health Annex
- 53 Abbottsford Falls Family Practice & Counseling
- 54 Juvenile Justice Center
of Philadelphia
- 55 CATCH
- 56 Intercultural Family Services, Inc.
- 57 Greater Philadelphia Health Action
AL-Assist Behavioral Health Care Center
- 58 Wedge Medical Center
- 59 Center for Family Relationships
- 60 Northeast Community Center for MH/MR
- 61 SRI Psychological Services
- 62 PATH, Inc.
- 63 NHS Human Services Outpatient Clinic -
Knights Road
- 64 SPIN, Inc.

Specialized Services-- Trauma

- 65 Children's Crisis Treatment Center
- 66 SAFE
- 67 Women Organized Against Rape (WOAR)
- 68 Assessment and Treatment Alternatives
- 69 Penn Center for Youth and Family Trauma Response
and Recovery
- 70 Joseph J. Peters Institute (JJPI)
- 71 Jewish Family and Children's
Services
- 72 Northern Home for Children
- 73 Anti-Violence Partnership of Philadelphia

SECTION 6: WHAT WILL BE EXPECTED OF ME?

WHAT WILL BE EXPECTED OF ME WHILE MY CHILD IS GETTING BEHAVIORAL HEALTH HELP?

You may be getting help for your child. But, you have a very important role in his/her care. In fact, you are a part of your child's care team. This means that you should expect to be actively involved in your child's care.

There are several key things that you should do to make sure that your child is getting the most out of his/her care.

- **You must get your child to his/her appointments.**

In order for your child to get the most out of his/her care, you need to make sure that your child attends all of his/her appointments. If you cannot make an appointment, you must call your behavioral health provider and let them know that you cannot make it. There may be another child who is waiting for an appointment and can take that spot.

- **You must attend re-assessments.**

Behavioral health providers will re-assess your child once every few months for services like Wraparound and STS. The behavioral health providers use these re-assessments to make sure your child's care plan is working for your child. You must go to these re-assessments. If you do not go to these re-assessments, your child's provider will not be able to keep on helping your child.

- **If your child has Medical Assistance (MA) or CHIP, you must renew your insurance.**

CHIP needs to be renewed once a year. Contact the insurance company on your insurance card to do this. MA needs to be renewed once every 6 months. Look for a letter in the mail already filled out with your information, that you have to make any changes on and send back.

If you do not renew CHIP once a year or if you do not renew MA once every 6 months, your child will no longer be covered by that insurance. This means that your child will no longer be able to get help.

Also, as part of your child's care team, you should expect to work closely with your child's therapist and listen to the therapist's advice for how to best help your child.

Sometimes you may also decide that in order to better help your child you want to get some additional care for yourself. If you want to get some behavioral health help for yourself, you should talk to your child's therapist or other behavioral health providers. You can also contact one of the behavioral health agencies listed on the red pages. Most of these agencies see both adults and children.

SECTION 7: SPECIAL SERVICES

WHAT SHOULD I DO IN AN EMERGENCY?

If the emergency is putting someone's life at risk, call 911.

If your child is having a behavioral health emergency, you can call the Children's Crisis Response Center at (215) 951-8300. You can also go to the Crisis Response Center right away. It is located in Albert Einstein Medical Hospital. You should try to call ahead first, so the staff can let you know what documents to bring with you. The Crisis Response Center is open 24-hours a day.

Einstein Children's Crisis Response Center

Germantown Campus

1 Penn Blvd., between Chew and Wister Streets

Philadelphia, PA 19144

If your child is having a behavioral health emergency and you are not sure where to go or what to do, you can also call the Mental Health Delegate Line at (215) 685-6440. The Mental Health Delegate Line can send a Mobile Emergency Team (MET) for home visits. If your child cooperates, MET can transport you and your child to the CRC. A parent or guardian must go with the child to the CRC.

You can also call the Crisis and Suicide Counseling Hotline at (215) 686-4420. Trained suicide and crisis intervention staff can provide counseling right away. They will also help you find more services.

WHAT RESOURCES ARE AVAILABLE FOR TRAUMA?

Trauma can be caused by a child seeing or going through a wide variety of negative events. These include:

- Car crashes
- Violence at home or in the community
- Natural disasters
- Sexual, physical, emotional, or verbal abuse
- Painful medical procedures
- Neglect
- Terrorism
- Sudden loss or death of a loved one

Children can recover from trauma. Some will recover with good family and community supports. Other children will need some more help. If the child does not get help, it can lead to long-term, harmful effects. If your child does not get better or gets worse after going through trauma, you should get help from a behavioral health provider that has trauma-focused treatment.

Trauma-focused treatment is specially designed to help children and their families overcome trauma-related difficulties. To find a trauma-focused provider, see the red pages.

WHAT RESOURCES ARE AVAILABLE FOR DRUG AND ALCOHOL TREATMENT FOR CHILDREN AND TEENS?

There are many behavioral health providers in Philadelphia that have drug and alcohol treatment for children and teens. Agencies that offer drug and alcohol treatment are listed in the red pages. If you have Medical Assistance, you can also call Community Behavioral Health (CBH) at 1 (888) 545-2600 for more information.

SECTION 8: OTHER RESOURCES

PARENTING CLASSES

Carson Valley Children's Aid

www.carsonvalley.org

Allegheny West Neighborhood Center

(215) 225-2649

2300 West Allegheny Ave., Philadelphia, 19132

Frankford Neighborhood Center

(215) 535-1039

4451 Frankford Ave., Philadelphia, 19124

Logan Olney Neighborhood Center

(215) 456-5670

800 West Olney Ave, Philadelphia, 19120

Council of Spanish Speaking Organizations, Inc. (Concilio)

(215) 627-3100

www.elconcilio.net

The Federation of Neighborhood Centers (FNC)

(215) 989-3566 x1103

www.federationnc.org

Neighborhood Interfaith Movement

(215) 843-5600

www.nimphilly.org

Pennsylvania Family Support Alliance

1 (800) 448-4906

www.pa-fsa.org

Turning Points for Children

(215) 875-3400

www.pssckids.org

PARENT SUPPORTS AND RESOURCES

NAMI-Philadelphia

1 (800) 223-0500; 1 (717) 238-1514

<http://philadelphia.nami.org>

Parent Action Network

(215) PARENTS [215-727-3687]

Parent to Parent of Pennsylvania

Parent to Parent direct line – 1 (888) 727-2706

Special Kids Network – 1 (800) 986-4550 (works with Parent to Parent)

www.parenttoparent.org

The Arc of Philadelphia

(215) 229-4550

2350 West Westmoreland St., Philadelphia 19140

Catholic Social Service – Family Service Centers

www.catholicsocialservicesphilly.org

[Direct link to family services sites: www.familyservices-phl.org/]

Northeast Philadelphia

7340 Jackson St., Philadelphia, 19136

(215) 624-5920

Southwest Philadelphia

6214 Grays Ave., Philadelphia, 19142

(215) 724-8550

Casa del Carmen

4400 North Reese St., Philadelphia 19140

(215) 329-5660

En español: www.familyservices-phl.org/casadel-carmenespanol.html

The Center for Autism

www.thecenterforautism.org

General Info: (215) 878-3400

3905 Ford Rd., Suite 6, Philadelphia, 19131

Intake: (215) 220-2121

2801 Grant Ave., Philadelphia, 19114

Intake: (215) 220-2163

Consumer Satisfaction Team, Inc.

www.thecst.com

520 N. Delaware Ave., Philadelphia, 19123

(215) 923-9627

Easter Seals of Southeastern Pennsylvania Division

sepa.easterseals.com

Healing Hurt People [St. Christopher's Hospital for Children]

3601 A Street, 2nd floor, 19134

(215) 427-3427

Parent Education Network (PEN)

www.parentednet.org

1 (800) 522-5827

Parents Involved Network (PIN)

(267) 507-3860

1211 Chestnut St., Floor 11, Philadelphia 19107

<http://www.mhasp.org/services/parents-involved-network-pin-philadelphia-county.html>

HELPFUL INTERNET SITES

Community Behavioral Health

www.dbhids.org/community-behavioral-health

COMPASS

<http://www.humanservices.state.pa.us/compass>

Disability Rights Network of Pennsylvania

drnpa.org

Division for Early Childhood: The Council for Exceptional Children

www.dec-sped.org

Education Law Center

www.elc-pa.org

Mental Health Association of Southeastern Pennsylvania (MHASP)

www.mhasp.org

National Child Traumatic Stress Network

www.nctsn.net

Pennsylvania Health Law Project (PHLP)

www.phlp.org

Pennsylvania Yellow Pages for Kids

www.yellowpagesforkids.com

Public Citizens for Children and Youth

www.pccy.org

The Children's Advocacy Project

www.cap4kids.org/Philadelphia

SECTION 9: GLOSSARY

1. **Behavioral health issue** – is the way someone thinks, acts, or feels that gets in the way of his/her daily life.
2. **Behavioral health providers** – people who are trained to care for behavioral health issues
3. **Therapists** – a type of behavioral health provider who gives the most one-on-one care to children with behavioral health needs. They can be a psychologist (MS, MA, PsyD, or PhD) or a social worker (MSW or PhD).
4. **Psychiatrist** – a type of behavioral health provider who is the medical doctor (MD, DO) of a child's care team and who usually orders medications.
5. **Sliding scale fee** – a small fee that uninsured persons may be asked to pay when getting behavioral health services.
6. **Behavioral health services** – the types of help your child can get for his/her behavioral health issues.
7. **Outpatient services** – types of behavioral health services that you receive in a behavioral health provider's office. These can include individual, group, or family therapy.
8. **Community-based services** – types of behavioral health services that are provided at home or in school. These can include wraparound and school-based services.
9. **Wraparound** – a type of community-based service that gives support to the child both in the home and at school. Depending on your child's needs, the team might include TSS, a Behavior Specialist Consultant, and a Mobile Therapist.
10. **Behavior Specialist Consultant** – this Wraparound worker figures out what the best care plan is for a child.
11. **Mobile Therapist** – this Wraparound worker will provide therapy for your child and family
12. **Therapeutic Staff Support (TSS)** – this Wraparound worker is trained to give a child one-on-one help in the classroom.
13. **School-Based Services** – behavioral health services that are provided at schools. These include Wrap-around, School Therapeutic Services (STS), and Children Achieving through Re-Education (CARE).
14. **School Therapeutic Services (STS)** – a school-based service that gives students support through both individual and group therapy. The STS team is made up of a Lead Clinician, Behavioral Health Worker, and Group Mobile Therapy.
15. **Lead Clinician** – an STS worker who will give children therapy at school.
16. **Behavioral Health Worker** – an STS worker who will give children help in the classroom.
17. **Group Mobile Therapy** – the part of STS where children with similar behavioral health needs will get to work together.
18. **Children Achieving through Re-Education (CARE)** – a school-based service that gives students with behavioral health needs the most support at school.
19. **Comprehensive Student Assistant Process (CSAP)** – a process used in the schools to help students who are having trouble at school.
20. **Medical Assistance (MA)** – the type of insurance that pays for community-based services. Your child may be eligible for MA based on your income or if your child has special needs.
21. **Community Behavioral Health (CBH)** – this is the insurance company who pays for behavioral health services for children insured through Medical Assistance in Philadelphia.
22. **Children's Health Insurance Program (CHIP)** - Pennsylvania's health insurance program for uninsured children and teens. In Philadelphia, CHIP is provided by Keystone Health Plan East, UnitedHealthcare, Kidz Partners, and Aetna.
23. **Medical Assistance Transportation Program (MATP)** – a program that gives your child free rides to his/her behavioral health appointments or repays you for the costs of getting your child to his/her care.
24. **Resource Specialist** – a specially trained person in public schools who can help you find outpatient services, and other supports and services, for your children.

For supporting this project, special thanks to:

***The Pew Charitable Trusts
and
The William Penn Foundation***

FOR MORE INFORMATION CONTACT:



Public Citizens for Children and Youth
1709 Benjamin Franklin Parkway, Sixth Floor
Philadelphia, PA 19103
215-563-5848
info@pccy.org / www.pccy.org

| School | School Telephone | School Based Social Services (SBSS) (Resource Specialists) | SBSS ProviderAgency Phone Number | School Therapeutic Services (STS) | STS Provider Agency Phone Number | CARE (see SBSS and STS listings for phone numbers) |
|--|------------------|--|----------------------------------|--|----------------------------------|--|
| For help with referrals to STS and CARE, you can also call the school's provider directly. | | | | | | |
| Academy at Palumbo | 215-351-7618 | Wordsworth | 215-643-5400 | | | |
| Aidair, Alexander | 215-291-4712 | WCA/Congreso | 215-236-9911/215-763-8870 | | | |
| Alcorn | 215-952-6219 | Wordsworth | 215-643-5400 | Wordsworth | 215-643-5400 | |
| Allen, Ethan | 215-537-2530 | Einstein | 215-456-9832 | Progressions | 215-924-0684 | |
| Allen, Ethel D. | 215-227-4404 | NorthEast Treatment Centers (NET) | 215-408-4944 | Northern Home | 215-482-1423 | |
| Amy James Martin | 215-291-4172 | Einstein | 215-456-9832 | | | |
| Amy Northwest | 215-951-5200 | Devereux | 215-864-6666 | | | |
| Anderson, Add B. | 215-471-2903 | Wordsworth | 215-643-5400 | Northern Home | 215-482-1423 | |
| Arthur, Chester A. | 215-875-5774 | Wordsworth | 215-643-5400 | CATCH | 215-218-9499 | |
| Arts Academy at Rush | 215-281-2603 | PATH | 215-728-4565 | | | |
| Bache-Martin | 215-648-5074 | NorthEast Treatment Centers (NET) | 215-408-4944 | Children's Crisis Treatment Center (CtC) | 215-496-0584/215-496-0707 | |
| Baldi, C.C.A. | 215-961-2003 | PATH | 215-728-4565 | | | |
| Barry | 215-471-2744 | Northern Home | 215-482-1423 | CATCH | 215-218-9499 | |
| Barton, Clara | 215-456-3007 | Carson Valley Children's Aid (CVCA) | 215-233-1960 | | | |
| Bartram, John | 215-492-6450 | | | | | |
| Beeber, Dimner | 215-581-5513 | Northern Home | 215-482-1423 | Resources for Human Development (RHD) | 215-508-3300 | |
| Bethune, Mary Mc Leod | 215-227-4433 | Carson Valley Children's Aid (CVCA) | 215-233-1960 | | | |
| Blaine, James G. | 215-684-5085 | | | Interac | 215-487-1330 | |
| Blankenburg, Rudolph | 215-581-5505 | Northern Home | 215-482-1423 | Community Council | 267-295-8850 | |
| Bodine, William W. | 215-351-7332 | WCA/Congreso | 215-236-9911/215-763-8870 | | | |
| Bok, Edward | 215-952-6200 | Wordsworth | 215-643-5400 | | | |
| Bregy, F. Amedee | 215-952-6218 | Wordsworth | 215-643-5400 | CATCH | 215-218-9499 | |
| Bridesburg | 215-537-2515 | Einstein | 215-456-9832 | | | |
| Brown, Henry A. | 215-291-4717 | WCA/Congreso | 215-236-9911/215-763-8870 | | | |
| Brown, Joseph H. | 215-335-5650 | PATH | 215-728-4565 | | | |
| Bryant, William Cullen | 215-471-2910 | Wordsworth | 215-643-5400 | WES | 215-456-2626 | |
| Carnell Annex at Fels | 215-537-2910 | Carson Valley Children's Aid (CVCA) | 215-233-1960 | WES | 215-456-2626 | |
| Carnell, Laura H. | 215-537-2527 | Carson Valley Children's Aid (CVCA) | 215-233-1960 | WES | 215-456-2626 | |
| Carroll, Charles | 215-291-4707 | Devereux | 215-864-6666 | | | |
| Carver HS for Eng & Science | 215-684-5079 | NorthEast Treatment Centers (NET) | 215-408-4944 | | | |
| Cassidy, Lewis C. | 215-581-5506 | Northern Home | 215-482-1423 | | | |
| Catherine Annex | 215-727-5780 | Wordsworth | 215-643-5400 | | | |
| Catherine, J. W. | 215-727-2155 | Wordsworth | 215-643-5400 | | | |
| Cayuga | 215-456-3167 | WCA/Congreso | 215-236-9911/215-763-8870 | | | |
| Central | 215-276-5262 | Devereux | 215-864-6666 | | | |
| Childs, George W. | 215-952-6213 | Wordsworth | 215-643-5400 | Philadelphia Mental Health Center (PMHC) | 215-735-9379 | Wordsworth |
| Clemente, Roberto | 215-291-5400 | WCA/Congreso | 215-236-9911/215-763-8870 | WES | 215-456-2626 | |
| Cleveland, Grover | 215-227-4415 | Carson Valley Children's Aid (CVCA) | 215-233-1960 | | | |
| Comegys, Benjamin B. | 215-727-2162 | Wordsworth | 215-643-5400 | WES | 215-456-2626 | |
| Comly, Watson | 215-961-2008 | PATH | 215-728-4565 | | | |
| Communications Tech | 215-492-6958 | Wordsworth | 215-643-5400 | | | |
| Conwell, Russell | 215-227-4722 | WCA/Congreso | 215-236-9911/215-763-8870 | | | |
| Cooke, Jay | 215-456-3002 | Carson Valley Children's Aid (CVCA) | 215-233-1960 | | | |
| Cook-Wissahickon | 215-487-4463 | Northern Home | 215-482-1423 | | | |
| Cramp, William | 215-291-4704 | WCA/Congreso | 215-236-9911/215-763-8870 | | | |
| Creative And Performing Arts | 215-952-2462 | Wordsworth | 215-643-5400 | | | |
| Creighton, Thomas | 215-537-2531 | Carson Valley Children's Aid (CVCA) | 215-233-1960 | Elwyn | 215-895-5588 | |
| Crossan, Kennedy C. | 215-728-5014 | PATH | 215-728-4565 | | | |
| Day, Anna Blakiston | 215-276-5250 | Devereux | 215-864-6666 | | | |
| DeBurgos, Julia | 215-291-4065 | WCA/Congreso | 215-236-9911/215-763-8870 | | | Children's Crisis Treatment Center (CtC) |
| Decatur, Stephen | 215-281-2606 | PATH | 215-728-4565 | | | |
| Dick, William | 215-684-5081 | NorthEast Treatment Centers (NET) | 215-408-4944 | | | |
| Disston, Hamilton | 215-335-5661 | Einstein | 215-456-9832 | | | |
| Dobbins, Murrell | 215-227-4421 | CATCH | 215-218-9499 | | | |
| Dobson, James | 215-487-4460 | Northern Home | 215-482-1423 | | | |
| Douglas, Stephen A. | 215-291-4705 | Einstein | 215-456-9832 | | | |
| Drew, Charles R. | 215-823-8204 | Northern Home | 215-482-1423 | CATCH | 215-218-9499 | |
| Duckrey, Tanner | 215-684-5066 | NorthEast Treatment Centers (NET) | 215-408-4944 | | | |
| Dunbar | 215-684-5065 | WCA/Congreso | 215-236-9911/215-763-8870 | NorthEast Treatment Centers (NET) | 215-408-4944 | |
| Edison, Thomas A. | 215-324-9599 | | | | | |
| Edmonds, Franklin S. | 215-276-5261 | Devereux | 215-864-6666 | Resources for Human Development (RHD) | 215-508-3300 | |
| Edmunds, Henry R. | 215-537-2520 | Einstein | 215-456-9832 | Resources for Human Development (RHD) | 215-508-3300 | |
| Elkin, Lewis | 215-291-4701 | WCA/Congreso | 215-236-9911/215-763-8870 | COMHAR | 267-861-4382 | |

| School | School Telephone | School Based Social Services (SBSS) (Resource Specialists) | SBSS ProviderAgency Phone Number | School Therapeutic Services (STS) | STS Provider Agency Phone Number | CARE (see SBSS and STS listings for phone numbers) |
|--|------------------|--|----------------------------------|--|----------------------------------|--|
| Ellwood | 215-276-5286 | Devereux | 215-864-6666 | | | |
| Emlen, Eleanor C. | 215-951-4010 | Devereux | 215-864-6666 | Northern Home | 215-482-1423 | |
| Fairhill | 215-227-4406 | WCA/Congreso | 215-236-9911/215-763-8870 | NorthEast Treatment Centers (NET) | 215-408-4944 | |
| Farrell, Louis H. | 215-728-5009 | PATH | 215-728-4565 | | | |
| Fell, D. Newlin | 215-952-6237 | Wordsworth | 215-643-5400 | | | |
| Fels | 215-537-2516 | | | | | |
| Feltonville Intermediate | 215-456-3012 | Carson Valley Children's Aid (CVCA) | 215-233-1960 | Carson Valley Children's Aid (CVCA) | 215-233-1960 | |
| Feltonville Sch of Arts & Sci | 215-456-5603 | Carson Valley Children's Aid (CVCA) | 215-233-1960 | Carson Valley Children's Aid (CVCA) | 215-233-1960 | |
| Ferguson, Joseph | 215-684-5092 | WCA/Congreso | 215-236-9911/215-763-8870 | Children's Crisis Treatment Center (CtC) | 215-496-0584 215-496-0707 | |
| Finletter, Thomas K. | 215-276-5265 | Carson Valley Children's Aid (CVCA) | 215-233-1960 | | | Wordsworth |
| Fitler, Edwin H. | 215-951-4009 | Devereux | 215-864-6666 | | | |
| FitzPatrick, Aloysius L. | 215-281-2602 | PATH | 215-728-4565 | | | |
| FitzSimons | 215-227-4431 | | | | | |
| Forrest, Edwin | 215-335-5652 | Einstein | 215-456-9832 | Elwyn | 215-895-5588 | |
| Fox Chase | 215-728-5016 | PATH | 215-728-4565 | | | |
| Frank, Anne | 215-961-2005 | PATH | 215-728-4565 | | | |
| Note: Outpatient clinic available at the following school. | | | | | | |
| Frankford HS | 215-537-2519 | WES | 215-456-2626 | | | |
| Franklin Learning Center | 215-684-5916 | NorthEast Treatment Centers (NET) | 215-408-4944 | | | |
| Franklin, Benjamin | 215-299-4662 | CATCH | 215-218-9499 | | | |
| Franklin, Benjamin (ES) | 215-728-5017 | Carson Valley Children's Aid (CVCA) | 215-233-1960 | NorthEast Treatment Centers (NET) | 215-408-4944 | |
| Fulton, Robert | 215-951-4005 | Devereux | 215-864-6666 | | | |
| Furness, Horace | 215-952-6226 | CATCH | 215-218-9499 | | | |
| Germantown | 215-951-4004 | | | | | |
| Gideon, Edward | 215-684-5072 | NorthEast Treatment Centers (NET) | 215-408-4944 | | | |
| Girard Academic Music Program | 215-952-8589 | Wordsworth | 215-643-5400 | | | |
| Girard, Stephen | 215-952-8554 | Wordsworth | 215-643-5400 | Wordsworth | 215-643-5400 | |
| Girls High School | 215-276-5258 | Carson Valley Children's Aid (CVCA) | 215-233-1960 | | | |
| Gompers, Samuel | 215-581-5503 | Northern Home | 215-482-1423 | Holcomb | 610-352-8942 | |
| Greenberg, Joseph | 215-961-2002 | PATH | 215-728-4565 | Progressions | 215-924-0684 | |
| Greenfield, Albert M. | 215-299-3566 | Wordsworth | 215-643-5400 | | | |
| Hackett, Horatio B. | 215-291-4706 | WCA/Congreso | 215-236-9911/215-763-8870 | | | |
| Hamilton, Andrew | 215-471-2911 | Wordsworth | 215-643-5400 | WES | 215-456-2626 | |
| Hancock, John | 215-281-2604 | PATH | 215-728-4565 | | | |
| Harding, Warren G. | 215-537-2528 | Einstein | 215-456-9832 | Resources for Human Development (RHD) | 215-508-3300 | |
| Harrington, Avery | 215-471-2914 | Wordsworth | 215-643-5400 | Resources for Human Development (RHD) | 215-508-3300 | |
| Harrington, Avery (Annex) | 215-471-2909 | Wordsworth | 215-643-5400 | | | |
| Harrison, William | 215-684-5067 | NorthEast Treatment Centers (NET) | 215-408-4944 | | | |
| Hartranft, John F. | 215-684-5088 | WCA/Congreso | 215-236-9911/215-763-8870 | | | |
| Henry, Charles W. | 215-951-4006 | Devereux | 215-864-6666 | | | |
| Heston, Edward | 215-581-5514 | Northern Home | 215-482-1423 | Intercultural | 215-386-8490 | 215-482-1423 |
| High School of the Future | 215-823-5502 | Northern Home | 215-482-1423 | | | |
| Hill, L.P. | 215-684-5077 | NorthEast Treatment Centers (NET) | 215-408-4944 | | | |
| Hill-Freedman | 215-276-5260 | Devereux | 215-864-6666 | | | |
| Holme, Thomas | 215-335-5656 | PATH | 215-728-4565 | Progressions | 215-924-0684 | |
| Hopkinson, Francis | 215-537-2526 | Einstein | 215-456-9832 | NHS, Human Services | 1-888-647-0020 | |
| Houston, Henry E. | 215-248-6608 | Devereux | 215-864-6666 | | | |
| Howe, Julia Ward | 215-276-5270 | Devereux | 215-864-6666 | | | |
| Huey, Samuel B. | 215-471-2901 | Wordsworth | 215-643-5400 | Northern Home | 215-482-1423 | |
| Hunter, William H. | 215-291-4710 | WCA/Congreso | 215-236-9911/215-763-8870 | | | |
| Jackson, Andrew | 215-952-6223 | Wordsworth | 215-643-5400 | CATCH | 215-218-9499 | |
| Jenks, A.S. | 215-952-6224 | Wordsworth | 215-643-5400 | | | |
| Jenks, John S. | 215-248-6604 | Devereux | 215-864-6666 | | | |
| Jones, John Paul | 215-291-4709 | Einstein | 215-456-9832 | Community Council | 267-295-8850 | |
| Juniata Park Academy | 215-289-7930 | Einstein | 215-456-9832 | NorthEast Treatment Centers (NET) | 215-408-4944 | |
| Kearny, General Philip | 215-351-7343 | NorthEast Treatment Centers (NET) | 215-408-4944 | | | |
| Kelley, W.D. | 215-684-5071 | NorthEast Treatment Centers (NET) | 215-408-4944 | | | |
| Kelly, John B. | 215-951-4011 | Devereux | 215-864-6666 | Northern Home | 215-482-1423 | |
| Kenderton | 215-227-4412 | Carson Valley Children's Aid (CVCA) | 215-233-1960 | Interac | 215-487-1330 | |
| Kensington CAPA HS | 215-291-5010 | Einstein | 215-456-9832 | | | |
| Kensington Culinary & Arts | 215-291-5185 | Einstein | 215-456-9832 | | | |
| Kensington Intern'l Bus & Fin | 215-291-5168 | Einstein | 215-456-9832 | | | |
| Kensington Urban Education | 215-492-6454 | Einstein | 215-456-9832 | | | |
| Key, Francis Scott | 215-952-6216 | Wordsworth | 215-643-5400 | | | |
| King, Martin L. | 215-276-5253 | Devereux | 215-864-6666 | | | |

| School | School Telephone | School Based Social Services (SBSS) (Resource Specialists) | SBSS ProviderAgency Phone Number | School Therapeutic Services (STS) | STS Provider Agency Phone Number | CARE (see SBSS and STS listings for phone numbers) |
|--------------------------------|------------------|--|----------------------------------|---|----------------------------------|--|
| Kinsey, John L. | 215-276-5266 | Devereux | 215-864-6666 | WES | 215-456-2626 | |
| Kirkbride, Elizabeth B. | 215-952-6214 | Wordsworth | 215-643-5400 | | | |
| La Brum MS | 215-281-2607 | PATH | 215-728-4565 | | | |
| Lamberton HS | 215-581-5647 | Northern Home | 215-482-1423 | Holcomb | 610-352-8942 | |
| Lankenau | 215-487-4465 | Devereux | 215-864-6666 | | | |
| Lawton, Henry W. | 215-335-5659 | Einstein | 215-456-9832 | | | |
| Lea, Henry C. | 215-471-2915 | Wordsworth | 215-643-5400 | | | |
| Leeds | 215-428-6602 | Devereux | 215-864-6666 | Resources for Human Development (RHD) | 215-508-3300 | |
| Leidy, Joseph | 215-581-5500 | Northern Home | 215-482-1423 | | | |
| Levering, William | 215-487-4462 | Northern Home | 215-482-1423 | Northern Home | 215-482-1423 | |
| Lincoln | 215-335-5653 | | | | | |
| Lingelbach, Anna L. | 215-951-4001 | Devereux | 215-864-6666 | | | |
| Locke, Alain | 215-823-8202 | Northern Home | 215-482-1423 | Carson Valley Children's Aid (CVCA) | 215-233-1960 | |
| Loesche, William H. | 215-961-2000 | PATH | 215-728-4565 | | | |
| Logan, James | 215-456-3006 | Devereux | 215-864-6666 | Northern Home | 215-482-1423 | |
| Longstreth, William | 215-727-2158 | Wordsworth | 215-643-5400 | Resources for Human Development (RHD) | 215-508-3300 | |
| Lowell, James R. | 215-276-5272 | Carson Valley Children's Aid (CVCA) | 215-233-1960 | Elwyn | 215-895-5588 | |
| Lowlow, James R. | 215-684-5060 | NorthEast Treatment Centers (NET) | 215-408-4944 | NorthEast Treatment Centers (NET) | 215-408-4944 | |
| Marshall, John | 215-537-2521 | Einstein | 215-456-9832 | Progressions | 215-924-0684 | |
| Marshall, Thurgood | 215-456-0170 | Carson Valley Children's Aid (CVCA) | 215-233-1960 | | | |
| Mastbaum, Jules E. | 215-291-4703 | Devereux | 215-864-6666 | | | |
| Masterman | 215-299-4661 | NorthEast Treatment Centers (NET) | 215-408-4944 | | | |
| Mayfair | 215-335-5651 | Einstein | 215-456-9832 | Children's Crisis Treatment Center CcTC | 215-496-0584/215-496-0707 | |
| McCall, General George | 215-351-7350 | Wordsworth | 215-643-5400 | | | |
| McCloskey, John F. | 215-248-6600 | Devereux | 215-864-6666 | | | |
| McClure, Alexander | 215-456-3001 | WCA/Congreso | 215-236-9911/215-763-8870 | WES | 215-456-2626 | |
| McDaniel, Delaplaine(Lower) | 215-952-6380 | Wordsworth | 215-643-5400 | Philadelphia Mental Health Center (PMHC) | 215-735-9379 | |
| McDaniel, Delaplaine(Upper) | 215-952-6380 | Wordsworth | 215-643-5400 | Philadelphia Mental Health Center (PMHC) | 215-735-9379 | |
| McKinley, William | 215-291-4702 | WCA/Congreso | 215-236-9911/215-763-8870 | | | |
| McMichael, Morton | 215-823-8205 | Northern Home | 215-482-1423 | | | |
| Meade, General George | 215-684-5062 | NorthEast Treatment Centers (NET) | 215-408-4944 | | | |
| Meehan, Austin | 215-335-5654 | PATH | 215-728-4565 | | | |
| Meredith, William M. | 215-351-7360 | Wordsworth | 215-643-5400 | | | |
| Middle Years Alternative (MYA) | 215-581-5633 | Northern Home | 215-482-1423 | | | |
| Mifflin, Thomas | 215-951-4007 | Northern Home | 215-482-1423 | | | |
| Mitchell, Weir | 215-727-2160 | Wordsworth | 215-643-5400 | Resources for Human Development (RHD) | 215-508-3300 | |
| Moffet, John | 215-291-4721 | NorthEast Treatment Centers (NET) | 215-408-4944 | | | |
| Moore, J. Hampton | 215-728-5011 | PATH | 215-728-4565 | | | |
| Morris, Robert | 215-684-5087 | NorthEast Treatment Centers (NET) | 215-408-4944 | Assessment and Treatment Alternatives (ATA) | 215-405-2100 | |
| Morrison, Andrew J. | 215-456-3004 | Carson Valley Children's Aid (CVCA) | 215-233-1960 | | | |
| Morton (Annex) | 215-727-2028 | Wordsworth | 215-643-5400 | WES | 215-456-2626 | |
| Morton, Thomas G. | 215-727-2164 | Wordsworth | 215-643-5400 | WES | 215-456-2626 | |
| Motivation HS | 215-492-6451 | Wordsworth | 215-643-5400 | | | |
| Munoz-Marin, Luis | 215-291-8825 | WCA/Congreso | 215-236-9911/215-763-8870 | Children's Crisis Treatment Center CcTC | 215-496-0584/215-496-0707 | |
| National Constitution HS | 215-351-7310 | WCA/Congreso | 215-236-9911/215-763-8870 | | | |
| Nebinger, George W. | 215-952-6202 | Wordsworth | 215-643-5400 | | | |
| Northeast High | 215-728-5018 | Devereux | 215-864-6666 | | | |
| Olney Elementary | 215-456-3003 | Carson Valley Children's Aid (CVCA) | 215-233-1960 | | | |
| Overbrook Educational Center | 215-581-5890 | Northern Home | 215-482-1423 | | | |
| Overbrook Elementary | 215-581-5691 | Northern Home | 215-482-1423 | | | |
| Overbrook High | 215-581-5507 | | | | | |
| Parkway Center City | 215-351-7095 | NorthEast Treatment Centers (NET) | 215-408-4944 | | | |
| Parkway Northwest | 215-248-6220 | Devereux | 215-864-6666 | | | |
| Parkway West | 215-581-5510 | Northern Home | 215-482-1423 | | | |
| Pastorius, Francis | 215-951-4008 | Devereux | 215-864-6666 | Interac | 215-487-1330 | WES |
| Patterson, John | 215-492-6453 | Wordsworth | 215-643-5400 | | | |
| Penn Alexander | 215-823-5465 | Wordsworth | 215-643-5400 | | | |
| Penn Treaty | 215-291-4715 | WCA/Congreso | 215-236-9911/215-763-8870 | COMHAR | 267-861-4382 | |
| Pennell | 215-276-5267 | Devereux | 215-864-6666 | Resources for Human Development (RHD) | 215-508-3300 | |
| Pennypacker, Samuel | 215-276-5271 | Devereux | 215-864-6666 | Green Tree | 215-843-4528 | |
| Penrose | 215-492-6455 | Wordsworth | 215-643-5400 | | | |
| Pepper, George | 215-492-5467 | Wordsworth | 215-643-5400 | Carson Valley Children's Aid (CVCA) | 215-233-1960 | |

| School | School Telephone | School Based Social Services (SBSS) (Resource Specialists) | SBSS ProviderAgency Phone Number | School Therapeutic Services (STS) | STS Provider Agency Phone Number | CARE (see SBSS and STS listings for phone numbers) |
|-------------------------------|------------------|--|----------------------------------|---|----------------------------------|--|
| Phila. HS for Business & Tech | 215-351-7375 | NorthEast Treatment Centers (NET) | 215-408-4944 | | | |
| Pierce, Thomas M. | 215-227-4411 | NorthEast Treatment Centers (NET) | 215-408-4944 | | | |
| PMA at Leeds | 215-248-6650 | Devereux | 215-864-6666 | | | |
| PMA at Elverson | 215-684-5091 | WCA/Congreso | 215-236-9911/215-763-8870 | | | |
| Pollock, Robert B. | 215-961-2004 | PATH | 215-728-4565 | | | |
| Potter-Thomas | 215-227-4423 | WCA/Congreso | 215-236-9911/215-763-8870 | Northern Home | 215-482-1423 | |
| Powel, Samuel | 215-823-8201 | Northern Home | 215-482-1423 | | | |
| Pratt, Anna | 215-684-5083 | NorthEast Treatment Centers (NET) | 215-408-4944 | Assessment and Treatment Alternatives (ATA) | 215-405-2100 | |
| Prince Hall | 215-276-5255 | Devereux | 215-864-6666 | | | |
| Randolph Skills Ctr. | 215-227-4407 | Northern Home | 215-482-1423 | | | |
| Reynolds, General John | 215-684-5061 | NorthEast Treatment Centers (NET) | 215-408-4944 | Children's Crisis Treatment Center CcTC | 215-496-0584/215-496-0707 | |
| Rhawnhurst | 215-728-5013 | PATH | 215-728-4565 | | | |
| Rhoads, James | 215-581-5504 | Northern Home | 215-482-1423 | Community Council | 267-295-8850 | |
| Rhodes, E. Washington | 215-227-4402 | Devereux | 215-864-6666 | | | |
| Richmond | 215-291-4718 | Einstein | 215-456-9832 | NHS, Human Services | 1-888-647-0020 | |
| Robeson HS for Human Services | 215-823-8207 | Northern Home | 215-482-1423 | | | |
| Roosevelt, Theodore | 215-951-4170 | Devereux | 215-864-6666 | Northern Home | 215-482-1423 | |
| Rowen, William | 215-276-5251 | Devereux | 215-864-6666 | Green Tree | 215-843-4528 | |
| Roxborough | 215-487-4464 | Devereux | 215-864-6666 | | | |
| Saul, Walter B. | 215-487-4467 | Devereux | 215-864-6666 | | | |
| Sayre | 215-471-2904 | CATCH | 215-218-9499 | | | |
| Science Leadership Academy | 215-979-5620 | NorthEast Treatment Centers (NET) | 215-408-4944 | | | |
| Sharswood, George | 215-952-6212 | Wordsworth | 215-643-5400 | | | |
| Shaw, Anna | 215-727-2161 | Wordsworth | 215-643-5400 | Carson Valley Children's Aid (CVCA) | 215-233-1960 | |
| Shawmont | 215-487-4466 | Northern Home | 215-482-1423 | | | |
| Sheppard | 215-291-4711 | WCA/Congreso | 215-236-9911/215-763-8870 | | | |
| Sheridan West Academy | 215-537-2920 | Einstein | 215-456-9832 | | | |
| Sheridan, P. | 215-291-4724 | Einstein | 215-456-9832 | Elwyn | 215-895-5588 | |
| Smith | 215-952-6222 | Wordsworth | 215-643-5400 | CATCH | 215-218-9499 | |
| Solis-Cohen, S. | 215-728-5012 | PATH | 215-728-4565 | Children's Crisis Treatment Center CcTC | 215-496-0584/215-496-0707 | |
| South Philadelphia | 215-952-6220 | CATCH | 215-218-9499 | | | |
| Southwark | 215-952-8606 | Wordsworth | 215-643-5400 | CATCH | 215-218-9499 | |
| Spring Garden | 215-684-5070 | NorthEast Treatment Centers (NET) | 215-408-4944 | | | |
| Spruance, Gilbert | 215-537-2514 | PATH | 215-728-4565 | Children's Crisis Treatment Center CcTC | 215-496-0584/215-496-0707 | |
| Stanton, Edwin M. | 215-875-3185 | Wordsworth | 215-643-5400 | | | |
| Stanton, M.H. | 215-227-4434 | NorthEast Treatment Centers (NET) | 215-408-4944 | Northern Home | 215-482-1423 | |
| Stearne, Allen M. | 215-537-2522 | Einstein | 215-456-9832 | | | |
| Steel, Edward | 215-456-3008 | Carson Valley Children's Aid (CVCA) | 215-233-1960 | Interac | 215-487-1330 | |
| Strawberry Mansion | 215-684-5089 | Devereux | 215-864-6666 | | | |
| Sullivan, James J. | 215-537-2524 | Einstein | 215-456-9832 | Progressions | 215-924-0684 | |
| Swenson Arts &Tech | 215-961-2009 | Devereux | 215-864-6666 | | | |
| Taggart, John H. | 215-952-6228 | Wordsworth | 215-643-5400 | CATCH | 215-218-9499 | |
| Taylor, John | 215-227-4435 | WCA/Congreso | 215-236-9911/215-763-8870 | | | |
| Tilden, William | 215-492-6454 | Wordsworth | 215-643-5400 | | | |
| University City | 215-387-5100 | | | | | |
| Vare, Abigail | 215-952-8620 | Wordsworth | 215-643-5400 | | | |
| Vaux, Roberts | 215-684-5068 | CATCH | 215-218-9499 | | | |
| Wagner, General Louis | 215-276-5252 | Devereux | 215-864-6666 | Green Tree | 215-843-4528 | |
| Waring, Laura W. | 215-684-5073 | NorthEast Treatment Centers (NET) | 215-408-4944 | | | |
| Washington Jr., Grover | 215-456-0422 | Carson Valley Children's Aid (CVCA) | 215-233-1960 | Elwyn | 215-895-5588 | |
| Washington, George | 215-961-2001 | Devereux | 215-864-6666 | | | |
| Washington, George Elem. | 215-952-6209 | Wordsworth | 215-643-5400 | CATCH | 215-218-9499 | |
| Washington, Martha | 215-823-8203 | Northern Home | 215-482-1423 | | | Community Council |
| Webster, John | 215-537-2525 | Einstein | 215-456-9832 | Community Council | 267-295-8850 | |
| Welsh, John | 215-291-4708 | WCA/Congreso | 215-236-9911/215-763-8870 | | | |
| West Philadelphia | 215-471-2902 | | | | | |
| Whittier, John | 215-227-4410 | NorthEast Treatment Centers (NET) | 215-408-4944 | Community Council | 267-295-8850 | Community Council |
| Widener Memorial | 215-456-3015 | Devereux | 215-864-6666 | | | |
| Willard, Frances | 215-291-4714 | Einstein | 215-456-9832 | NHS, Human Services | 1-888-647-0020 | |
| Wilson, Alexander | 215-823-8206 | Wordsworth | 215-643-5400 | | | |
| Wilson, Woodrow | 215-728-5015 | PATH | 215-728-4565 | Children's Crisis Treatment Center (CcTC) | 215-496-0584/215-496-0707 | |
| Wister, John | 215-951-4003 | Devereux | 215-864-6666 | Interac | 215-487-1330 | |
| Wright, Richard | 215-684-5076 | NorthEast Treatment Centers (NET) | 215-408-4944 | Assessment and Treatment Alternatives (ATA) | 215-405-2100 | |
| Ziegler, William H. | 215-537-2510 | Einstein | 215-456-9832 | | | |